

351 - 372



<b>F100</b>	355
<b>F108</b>	355
<b>F110</b>	356
<b>F120</b>	357
<b>F130</b>	358
<b>F140</b>	359
<b>F150</b>	360
<b>F170</b>	361
<b>F180</b>	362
<b>F190</b>	363
<b>F201</b>	355
<b>F202</b>	369
<b>F272</b>	372
<b>F300</b>	364
<b>F302</b>	370
<b>F310</b>	365
<b>F312</b>	371
<b>F320</b>	366
<b>F330</b>	367
<b>F370</b>	368

Typ závitů	Тип резьбы	Typ Gwintu	Typ závitů
Standard	Стандарт	Standard	Štandard
Tolerance	Допуск	Tolerancja	Tolerancia
Náběhy	Заборный конус	Nakrój	Nábėhy
Materiál	Материал	Materiał	Materiál
Směr otáčení	Направление	Kierunek	Smer
Povlak	Покрытие	Pokrycie	Povlak
<ul style="list-style-type: none"> <li>■ vynikající</li> <li>● dobrý</li> </ul> Příklad 10 = řezná rychlost (m/min) +/- 10%	Основное применение Возможное применение Пример: 10 = Скорость резания в м/мин +/- 10%	Najlepsze zastosowanie Dobre zastosowanie Na Przykład 10 = prędkość skrawania w m/min +/- 10%	Vynikajúce Dobré Příklad 10 = rezná rýchlosť (m/min) +/- 10%
Kód	Код	Kod	Kód
Rozměrová řada	Ассортимент	Zakres	Rozsah rozmerov

AMG	Česky	Русский	Polski	Slovensky
1.1	magneticky měkká	Автоматная сталь	magnetyczna miękka	Magneticky mäkká oceľ
1.2	konstrukční uhlíkatá	Низкоуглеродистая сталь	konstrukcyjna do nawęglania	Konstruktívna oceľ,uhlíková
1.3	uhlíkatá	Углеродистая нелегированная сталь	węglowa	Uhlíková oceľ
1.4	legovaná	Легированная сталь	stopowa	Legovaná oceľ
1.5	legovaná, tvrzená a temperovaná	Легированная сталь после отжига	stopowa-hartowana i odpuszczana	Legovaná oceľ, tvrdená a temperovaná
1.6	legovaná, tvrzená a temperovaná	Высоколегированная сталь после отжига	stopowa-hartowana i odpuszczana	Legovaná oceľ, tvrdená a temperovaná
1.7	legovaná, tvrzená	Легированная закаленная сталь	stopowa-hartowana	Legovaná oceľ tvrdená
1.8	legovaná, tvrzená	Легированная закаленная сталь	stopowa-hartowana	Legovaná oceľ tvrdená, oceľ odolná oproti opotrebovaniu
2.1	automatová	Ферритная нержавеющая сталь	automatowa	Automatová nehrdzavejúca oceľ
2.2	austenitická	Аустенитная нержавеющая сталь	austenityczna	Austenická
2.3	féritická+austenitická	Ферритно-аустенитная нержавеющая сталь	ferrytyczna+austenityczna	Feriticko austenitická nehr. oceľ (Duplex)
2.4	precipitačně tvrzená	Сталь дисперсионного твердения	Utwardzane wydzieleniowo	Tvrdená nehr. oceľ
3.1	lamelární	Серый чугуn	szare	Sivá liatina
3.2	lamelární	Ковкий чугуn	szare	Sivá liatina
3.3	nodulární	Высокопрочный чугуn	sferoidalne ciągliwe	Tvárna liatina
3.4	nodulární	Высокопрочный чугуn	sferoidalne ciągliwe	Tvárna liatina
4.1	čistý	Технически чистый титан	niestopowy	Čistý titán
4.2	slitiny	Титановые сплавы	stopy tytanu	Zliatiny titánu
4.3	slitiny	Титановые сплавы	stopy tytanu	Zliatiny titánu
5.1	čistý	Технически чистый никель	niestopowy	Čistý nikel
5.2	slitiny	Никелевые сплавы	stopy niklu	Zliatiny niklu
5.3	slitiny	Никелевые сплавы	stopy niklu	Zliatiny niklu
6.1	bronz	Технически чистая медь	niestopowa	Bronz
6.2	β - mosaz, bronz	Бронза	Mosiądz-β,brąz	β - mosadz, bronz
6.3	bronz mosaz	Латунь	Mosiądz CuZn	Mosadz, bronz
6.4	bronz vysokopevnostní	Высокопрочная бронза	Brąz o wysokiej wytrzymałości	Vysokopevnostný bronz
7.1	Al, Mg, tváfené	Технически чистый алюминий/магний	Al.,Mg, niestopowe	Al, Mg, tvárnený (čistý)
7.2	Al slitiny, Si<0,5%	Сплавы Al с содержанием Si<0,5%	Al. Stopowe,Si<0,5%	Al zliatiny, Si<0,5%
7.3	Al slitiny, Si>0,5%<10%	Сплавы Al с содержанием 0,5%<Si<10%	Al. Stopowe,Si>0,5%<10%	Al zliatiny, Si>0,5%<10%
7.4	Al slitiny, Si>10%	Сплавы Al с содержанием Si>10%	Al. Stopowe,Si>10%	Al zliatiny, Si>10%
8.1	termoplasty	Термопластики	Tworzywa termoplastyczne	Termoplasty
8.2	termosety	Термоактивные полимеры	Tworzywa termoutwardzalne	Termosety
8.3	zpevněné plasty	Армированные полимеры	Zbrojone tworzywa sztuczne	Spevnené plasty
9.1	cermet (keramika)	Металлокерамика	Cermetale	Cermet (kov-keramika)
10.1	standardní grafit	Технический графит	Grafit standartowy	Grafit

M	M	M	MF	UNC	UNF	BSW	BSF	G	NPT	PG
ISO 2568	ISO 2568	ISO 2568	ISO 2568	ISO 2568	ISO 2568	ISO 2568	ISO 2568	ISO 2568	ISO 2568	ISO 2568
6g	6g	6g	6g	2A	2A	Medium	Medium	Class A	Normal	Normal
1.75XP	1.75XP	2.25XP	1.75XP	1.75XP	1.75XP	1.75XP	1.75XP	1.75XP	1.75XP	1.75XP
HSS	HSS	HSS-E	HSS	HSS	HSS	HSS	HSS	HSS	HSS	HSS



F100	F201	F108	F110	F120	F130	F140	F150	F170	F180	F190
M2 - M42	M3 - M20	M2 - M20	M4 - M40	No.8 - 1"	No.10 - 1"	1/8 - 1"	3/16 - 1/2	1/8 - 2"	1/8 - 1"	No.7 - No.36

AMG	355	355	355	356	357	358	359	360	361	362	363	ISO
1.1	■8	■8	●8	■8	■8	■8	■8	■8	■8	■8	■8	P 1
1.2	■7	■7	●7	■7	■7	■7	■7	■7	■7	■7	■7	P 1
1.3	■6	■6	■6	■6	■6	■6	■6	■6	■6	■6	■6	P 2
1.4	●5	●5	■5	●5	●5	●5	●5	●5	●5	●5	●5	P 3
1.5			●4									P 4
1.6												H 1
1.7												H 3
1.8												H 4
2.1	●4	●4	■4	●4	●4	●4	●4	●4	●4	●4	●4	M 1
2.2	●2	●2	■2	●2	●2	●2	●2	●2	●2	●2	●2	M 3
2.3			●1									M 2
2.4												S 2
3.1	■8	■8	■8	■8	■8	■8	■8	■8	■8	■8	■8	K 1
3.2	■7	■7	■7	■7	■7	■7	■7	■7	■7	■7	■7	K 2
3.3	■6	■6	■6	■6	■6	■6	■6	■6	■6	■6	■6	K 3
3.4	●5	●5	●5	●5	●5	●5	●5	●5	●5	●5	●5	K 4
4.1			●2									S 1
4.2												S 2
4.3	●2	●2	●2	●2	●2	●2	●2	●2	●2	●2	●2	S 3
5.1	●9	●9	●9	●9	●9	●9	●9	●9	●9	●9	●9	S 1
5.2	●2	●2	●2	●2	●2	●2	●2	●2	●2	●2	●2	S 2
5.3	●2	●2	●2	●2	●2	●2	●2	●2	●2	●2	●2	S 3
6.1	●9	●9	●9	●9	●9	●9	●9	●9	●9	●9	●9	N 3
6.2	●8	●8	●8	●8	●8	●8	●8	●8	●8	●8	●8	N 4
6.3	●7	●7	●7	●7	●7	●7	●7	●7	●7	●7	●7	N 3
6.4			●2									N 4
7.1	■10	■10	■10	■10	■10	■10	■10	■10	■10	■10	■10	N 1
7.2	■15	■15	■15	■15	■15	■15	■15	■15	■15	■15	■15	N 1
7.3	■15	■15	■15	■15	■15	■15	■15	■15	■15	■15	■15	N 1
7.4	●10	●10	●10	●10	●10	●10	●10	●10	●10	●10	●10	N 2
8.1	●15	●15	●15	●15	●15	●15	●15	●15	●15	●15	●15	O
8.2	●10	●10	●10	●10	●10	●10	●10	●10	●10	●10	●10	O
8.3	●5	●5	●5	●5	●5	●5	●5	●5	●5	●5	●5	O
9.1												H
10.1												O

	<b>M</b>	<b>MF</b>	<b>UNC</b>	<b>UNF</b>	<b>G</b>	<b>M</b>	<b>M</b>	<b>MF</b>	<b>G</b>
	BS 1127: 1950	BS 1127: 1950	BS 1127: 1950	BS 1127: 1950	BS 1127: 1950	DIN 382	BS 1127: 1950	BS 1127: 1950	DIN 382
						6g	6g	6g	Class A
	1.75XP	1.75XP	1.75XP	1.75XP	1.75XP	1.75XP	1.75XP	1.75XP	1.75XP
	<b>HSS</b>	<b>HSS</b>	<b>HSS</b>	<b>HSS</b>	<b>HSS</b>	<b>HSS</b>	<b>HSS</b>	<b>HSS</b>	<b>HSS</b>



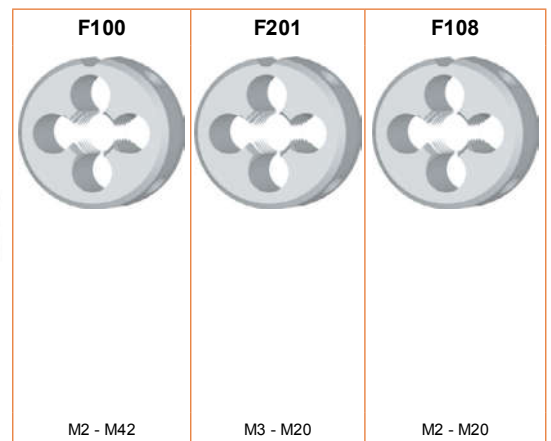
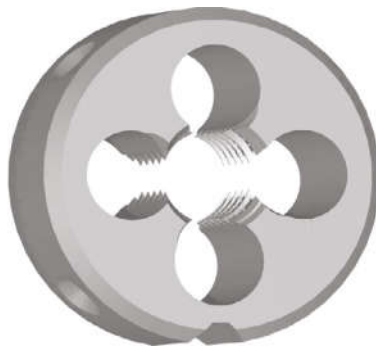
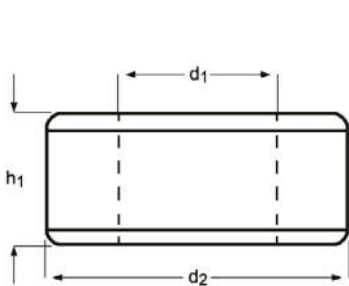
	<b>F300</b>	<b>F310</b>	<b>F320</b>	<b>F330</b>	<b>F370</b>	<b>F202</b>	<b>F302</b>	<b>F312</b>	<b>F272</b>
	M2 - M36	M3 - M30	No.4 - 1.1/4	No.4 - 1.1/2	1/8 - 1.1/2	M3 - M36	M3 - M36	M8 - M24	1/8 - 1.1/2

AMG	364	365	366	367	368	369	370	371	372	ISO
1.1	■8	■8	■8	■8	■8	■8	■8	■8	■8	P 1
1.2	■7	■7	■7	■7	■7	■7	■7	■7	■7	P 1
1.3	■6	■6	■6	■6	■6	■6	■6	■6	■6	P 2
1.4	●5	●5	●5	●5	●5	●5	●5	●5	●5	P 3
1.5										P 4
1.6										H 1
1.7										H 3
1.8										H 4
2.1	●4	●4	●4	●4	●4	●4	●4	●4	●4	M 1
2.2	●2	●2	●2	●2	●2	●2	●2	●2	●2	M 3
2.3										M 2
2.4										S 2
3.1	■8	■8	■8	■8	■8	■8	■8	■8	■8	K 1
3.2	■7	■7	■7	■7	■7	■7	■7	■7	■7	K 2
3.3	■6	■6	■6	■6	■6	■6	■6	■6	■6	K 3
3.4	●5	●5	●5	●5	●5	●5	●5	●5	●5	K 4
4.1										S 1
4.2										S 2
4.3	●2	●2	●2	●2	●2	●2	●2	●2	●2	S 3
5.1	●9	●9	●9	●9	●9	●9	●9	●9	●9	S 1
5.2	●2	●2	●2	●2	●2	●2	●2	●2	●2	S 2
5.3	●2	●2	●2	●2	●2	●2	●2	●2	●2	S 3
6.1	●9	●9	●9	●9	●9	●9	●9	●9	●9	N 3
6.2	●8	●8	●8	●8	●8	●8	●8	●8	●8	N 4
6.3	●7	●7	●7	●7	●7	●7	●7	●7	●7	N 3
6.4										N 4
7.1	■10	■10	■10	■10	■10	■10	■10	■10	■10	N 1
7.2	■15	■15	■15	■15	■15	■15	■15	■15	■15	N 1
7.3	■15	■15	■15	■15	■15	■15	■15	■15	■15	N 1
7.4	●10	●10	●10	●10	●10	●10	●10	●10	●10	N 2
8.1	●15	●15	●15	●15	●15	●15	●15	●15	●15	O
8.2	●10	●10	●10	●10	●10	●10	●10	●10	●10	O
8.3	●5	●5	●5	●5	●5	●5	●5	●5	●5	O
9.1										H
10.1										O

- F100** • M Závítovací očka  
**F201** • M Круглые плашки  
**F108** • M Narzynka metryczna  
 • M Závítovacie očka

F100; F201	▪	1.1	1.2	1.3	3.1	3.2	3.3	7.1	7.2	7.3								
	•	1.4	2.1	2.2	3.4	4.3	5.1	5.2	5.3	6.1	6.2	6.3	7.4	8.1	8.2	8.3		
F108	▪	1.3	1.4	2.1	2.2	3.1	3.2	3.3	7.1	7.2	7.3							
	•	1.1	1.2	1.5	2.3	3.4	4.1	4.3	5.1	5.2	5.3	6.1	6.2	6.3	6.4	7.4	8.1	8.2

F100	M	ISO 2568	6g	1.75XP	HSS			
F201	M	ISO 2568	6g	1.75XP	HSS			
F108	M	ISO 2568	6g	2.25XP	HSS-E			



M	P mm	d <sub>2</sub> Ø mm	h <sub>1</sub> mm	F100	F201	F108
2	0.40	16	5	F100M2 <sup>1)</sup>		F108M2 <sup>1)</sup>
2.5	0.45	16	5	F100M2.5 <sup>1)</sup>		F108M2.5 <sup>1)</sup>
2.6	0.45	16	5	F100M2.6 <sup>1)</sup>		
3	0.50	20	5	F100M3	F201M3	F108M3
3.5	0.60	20	5	F100M3.5		
4	0.70	20	5	F100M4	F201M4	F108M4
4.5	0.75	20	7	F100M4.5		
5	0.80	20	7	F100M5	F201M5	F108M5
6	1.00	20	7	F100M6	F201M6	F108M6
7	1.00	25	9	F100M7		
8	1.25	25	9	F100M8	F201M8	F108M8
9	1.25	25	9	F100M9		
10	1.50	30	11	F100M10	F201M10	F108M10
11	1.50	30	11	F100M11		
12	1.75	38	14	F100M12	F201M12	F108M12
14	2.00	38	14	F100M14	F201M14	F108M14
16	2.00	45	18	F100M16	F201M16	F108M16
18	2.50	45	18	F100M18	F201M18	F108M18
20	2.50	45	18	F100M20	F201M20	F108M20
22	2.50	55	22	F100M22		
24	3.00	55	22	F100M24		
27	3.00	65	25	F100M27		
30	3.50	65	25	F100M30		
33	3.50	65	25	F100M33		
36	4.00	65	25	F100M36		
39	4.00	75	30	F100M39		
42	4.50	75	30	F100M42		

<sup>1)</sup> bez lamače třísek / Без спиральной подточки / Bez prowadzenia / Bez lamača triesok

## F110

- MF Závitovací očka
- MF Круглые плашки
- MF Narzynka drobnozwojna
- MF Závitovacie očka

F110	▪	1.1	1.2	1.3	3.1	3.2	3.3	7.1	7.2	7.3						
	•	1.4	2.1	2.2	3.4	4.3	5.1	5.2	5.3	6.1	6.2	6.3	7.4	8.1	8.2	8.3

F110

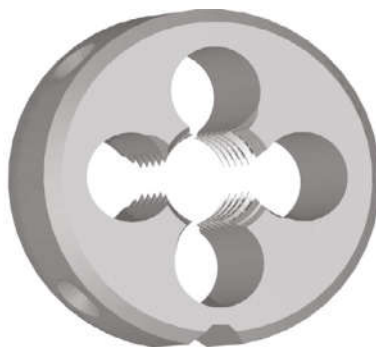
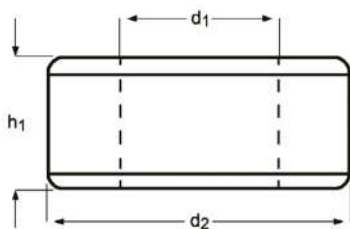
MF

ISO  
2568

6g

1.75XP

HSS



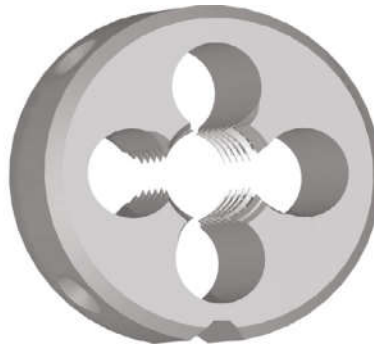
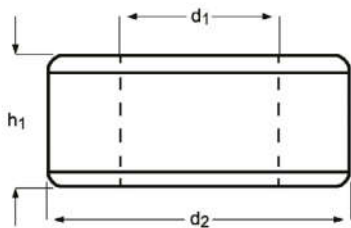
MF	P mm	d <sub>2</sub> Ø mm	h <sub>1</sub> mm	F110
4	0.50	20	5	F110M4X.5
5	0.50	20	5	F110M5X.5
6	0.75	20	7	F110M6X.75
7	0.75	25	9	F110M7X.75
8	0.75	25	9	F110M8X.75
8	1.00	25	9	F110M8X1.0
9	1.00	25	9	F110M9X1.0
10	0.75	30	11	F110M10X.75
10	1.00	30	11	F110M10X1.0
10	1.25	30	11	F110M10X1.25
11	1.00	30	11	F110M11X1.0
12	1.00	38	10	F110M12X1.0
12	1.25	38	10	F110M12X1.25
12	1.50	38	10	F110M12X1.5
13	1.00	38	10	F110M13X1.0
14	1.00	38	10	F110M14X1.0
14	1.25	38	10	F110M14X1.25
14	1.50	38	10	F110M14X1.5
15	1.00	38	10	F110M15X1.0
15	1.50	38	10	F110M15X1.5
16	1.00	45	14	F110M16X1.0
16	1.50	45	14	F110M16X1.5
18	1.00	45	14	F110M18X1.0
18	1.50	45	14	F110M18X1.5
20	1.00	45	14	F110M20X1.0
20	1.50	45	14	F110M20X1.5
22	1.00	55	16	F110M22X1.0
22	1.50	55	16	F110M22X1.5
24	1.00	55	16	F110M24X1.0
24	1.50	55	16	F110M24X1.5
24	2.00	55	16	F110M24X2.0
25	1.50	55	16	F110M25X1.5
26	1.50	55	16	F110M26X1.5
27	1.50	65	18	F110M27X1.5
27	2.00	65	18	F110M27X2.0
28	1.50	65	18	F110M28X1.5
30	1.50	65	18	F110M30X1.5
32	1.50	65	18	F110M32X1.5
35	1.50	65	18	F110M35X1.5
36	1.50	65	18	F110M36X1.5
40	1.50	75	20	F110M40X1.5

# F120

- UNC Závitovací očka
- UNC Круглые плашки
- UNC Narzynka drobnozwojna
- UNC Závitovacie očka

F120	▪	1.1	1.2	1.3	3.1	3.2	3.3	7.1	7.2	7.3						
	•	1.4	2.1	2.2	3.4	4.3	5.1	5.2	5.3	6.1	6.2	6.3	7.4	8.1	8.2	8.3

F120 **UNC** **ISO 2568** **2A** **1.75XP** **HSS**



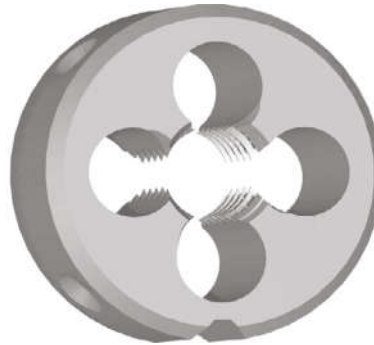
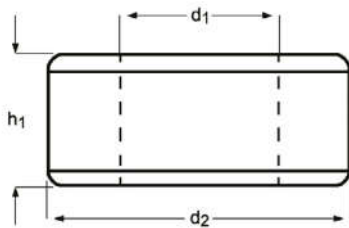
UNC	TPI	$d_1$ nom mm	$d_2$ $\emptyset$ mm	$h_1$ mm	F120
8	32	4.17	20	7	F1208-32
10	24	4.83	20	7	F12010-24
1/4	20	6.35	20	7	F1201/4
5/16	18	7.94	25	9	F1205/16
3/8	16	9.53	30	11	F1203/8
7/16	14	11.11	30	11	F1207/16
1/2	13	12.70	38	14	F1201/2
9/16	12	14.29	38	14	F1209/16
5/8	11	15.88	45	18	F1205/8
3/4	10	19.05	45	18	F1203/4
7/8	9	22.23	55	22	F1207/8
1"	8	25.40	55	22	F1201

## F130

- UNF Závitovací očka
- UNF Круглые плашки
- UNF Narzynka
- UNF Závitovacie očka

F130	▪	1.1	1.2	1.3	3.1	3.2	3.3	7.1	7.2	7.3						
	•	1.4	2.1	2.2	3.4	4.3	5.1	5.2	5.3	6.1	6.2	6.3	7.4	8.1	8.2	8.3

F130 UNF ISO 2568 2A 1.75XP HSS  



UNF	TPI	$d_1$ nom mm	$d_2$ $\emptyset$ mm	$h_1$ mm	F130
10	32	4.83	20	7	F13010-32
1/4	28	6.35	20	7	F1301/4
5/16	24	7.94	25	9	F1305/16
3/8	24	9.53	30	11	F1303/8
7/16	20	11.11	30	11	F1307/16
1/2	20	12.70	38	10	F1301/2
9/16	18	14.29	38	10	F1309/16
5/8	18	15.88	45	14	F1305/8
3/4	16	19.05	45	14	F1303/4
7/8	14	22.23	55	16	F1307/8
1"	12	25.40	55	16	F1301

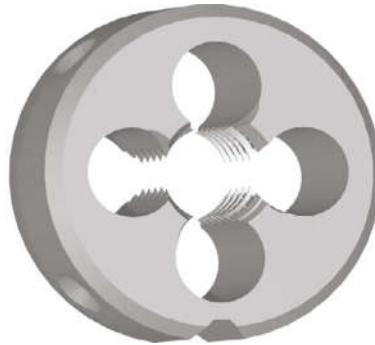
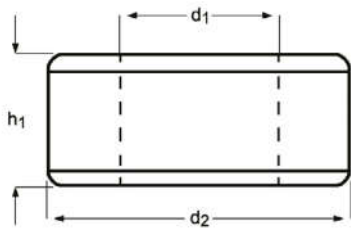


# F140

- BSW Závitovací očka
- BSW Круглые плашки
- BSW Narzynka
- BSW Závitovacie očka

F140	▪	1.1	1.2	1.3	3.1	3.2	3.3	7.1	7.2	7.3								
	•	1.4	2.1	2.2	3.4	4.3	5.1	5.2	5.3	6.1	6.2	6.3	7.4	8.1	8.2	8.3		

F140 **BSW** **ISO 2568** **Medium** **1.75XP** **HSS**

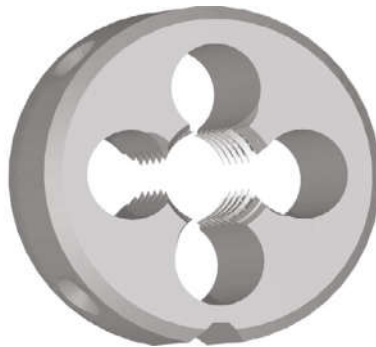
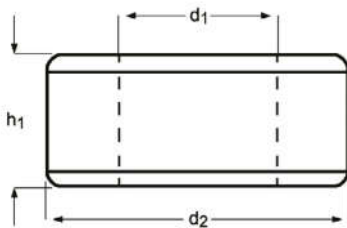


BSW	TPI	$d_1$ nom mm	$d_2$ Ø mm	$h_1$ mm	F140
1/8	40	3.17	20	5	F1401/8
3/16	24	4.76	20	7	F1403/16
1/4	20	6.35	20	7	F1401/4
5/16	18	7.94	25	9	F1405/16
3/8	16	9.53	30	11	F1403/8
7/16	14	11.11	30	11	F1407/16
1/2	12	12.70	38	14	F1401/2
5/8	11	15.88	45	18	F1405/8
3/4	10	19.05	45	18	F1403/4
7/8	9	22.23	55	22	F1407/8
1"	8	25.40	55	22	F1401

- F150**
- BSF Závıtovacı očka
  - BSF Круглые плашки
  - BSF Narzynka
  - BSF Závıtovacıe očka

<b>F150</b>	▪	1.1	1.2	1.3	3.1	3.2	3.3	7.1	7.2	7.3						
	•	1.4	2.1	2.2	3.4	4.3	5.1	5.2	5.3	6.1	6.2	6.3	7.4	8.1	8.2	8.3

**F150** **BSF** **ISO 2568** **Medium** **1.75XP** **HSS**  



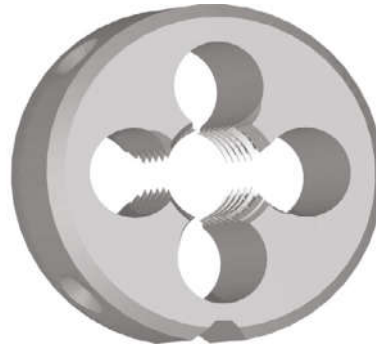
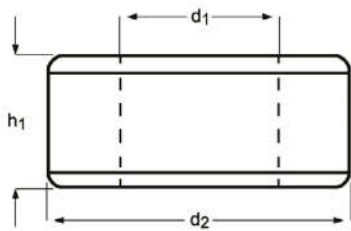
<b>BSF</b>	<b>TPI</b>	<b><math>d_1</math> nom mm</b>	<b><math>d_2</math> <math>\emptyset</math> mm</b>	<b><math>h_1</math> mm</b>	<b>F150</b>
3/16	32	4.76	20	7	F1503/16
1/4	26	6.35	20	7	F1501/4
5/16	22	7.94	25	9	F1505/16
3/8	20	9.53	30	11	F1503/8
7/16	18	11.11	30	11	F1507/16
1/2	16	12.70	38	10	F1501/2

# F170

- G(BSP) Závitovací očka
- G(BSP) Круглые плашки
- G(BSP) Narzynka
- G(BSP) Závitovacie očka

F170	▪	1.1	1.2	1.3	3.1	3.2	3.3	7.1	7.2	7.3						
	•	1.4	2.1	2.2	3.4	4.3	5.1	5.2	5.3	6.1	6.2	6.3	7.4	8.1	8.2	8.3

F170 **G** **ISO 2568** **Class A** **1.75XP** **HSS**



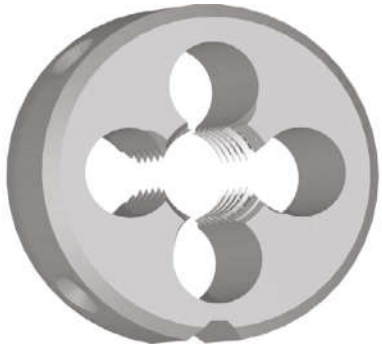
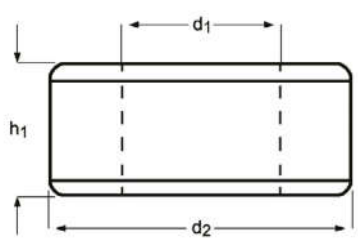
G(BSP)	TPI	d <sub>1</sub> nom mm	d <sub>2</sub> Ø mm	h <sub>1</sub> mm	F170
1/8	28	9.73	30	11	F1701/8
1/4	19	13.16	38	10	F1701/4
3/8	19	16.66	45	14	F1703/8
1/2	14	20.96	45	14	F1701/2
5/8	14	22.91	55	16	F1705/8
3/4	14	26.44	55	16	F1703/4
7/8	14	30.20	65	18	F1707/8
1"	11	33.25	65	18	F1701
1.1/8	11	37.89	75	20	F1701.1/8
1.1/4	11	41.91	75	20	F1701.1/4
1.1/2	11	47.80	90	22	F1701.1/2
2"	11	59.61	105	22	F1702

## F180

- NPT Závıtovacı očka
- NPT Круглые плашки
- NPT Narzynka
- NPT Závıtovacie očka

F180	▪	1.1	1.2	1.3	3.1	3.2	3.3	7.1	7.2	7.3						
	•	1.4	2.1	2.2	3.4	4.3	5.1	5.2	5.3	6.1	6.2	6.3	7.4	8.1	8.2	8.3

F180 **NPT** **ISO 2568** Normal **1.75XP** **HSS**  



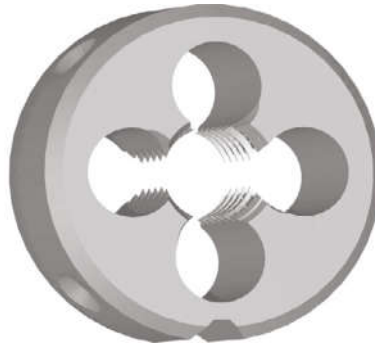
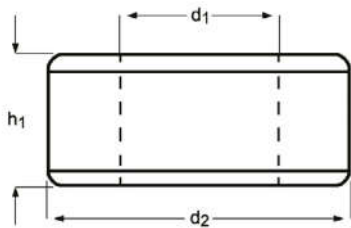
NPT	TPI	$d_1$ nom mm	$d_2$ Ø mm	$h_1$ mm	F180
1/8	27	9.49	30	11	F1801/8
1/4	18	12.49	38	14	F1801/4
3/8	18	15.93	45	14	F1803/8
1/2	14	19.77	45	18	F1801/2
3/4	14	25.12	55	22	F1803/4
1"	11.5	31.46	65	25	F1801

# F190

- PG Závitovací očka
- PG Круглые плашки
- PG Narzynka
- PG Závitovacie očka

F190	▪	1.1	1.2	1.3	3.1	3.2	3.3	7.1	7.2	7.3						
	•	1.4	2.1	2.2	3.4	4.3	5.1	5.2	5.3	6.1	6.2	6.3	7.4	8.1	8.2	8.3

F190 **PG** **ISO 2568** Normal **1.75XP** **HSS**  



PG	TPI	$d_1$ nom mm	$d_2$ $\emptyset$ mm	$h_1$ mm	F190
7	20	12.5	38	10	F190PG7
9	18	15.2	38	10	F190PG9
11	18	18.6	45	14	F190PG11
13.5	18	20.4	45	14	F190PG13.5
16	18	22.5	55	16	F190PG16
21	16	28.3	65	18	F190PG21
29	16	37.0	65	18	F190PG29
36	16	47.0	90	22	F190PG36

## F300

- M Závit. očka staviteľná
- M Регулируемые плашки
- M Narzynka nastawna
- M Závit. očká nastaviteľné

F300	▪	1.1	1.2	1.3	3.1	3.2	3.3	7.1	7.2	7.3						
	•	1.4	2.1	2.2	3.4	4.3	5.1	5.2	5.3	6.1	6.2	6.3	7.4	8.1	8.2	8.3

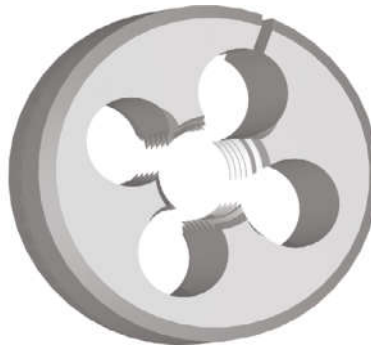
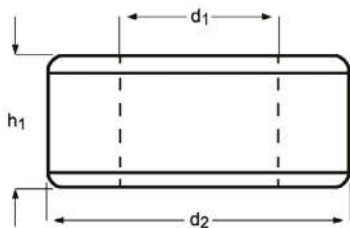
F300

M

BS  
1127:  
1950

1.75XP

HSS



F300



M2 - M36

M	P mm	d <sub>2</sub> Ø Inch	h <sub>1</sub> Inch	F300
2	0.40	13/16	1/4	F300M2X13/16
2.5	0.45	13/16	1/4	F300M2.5X13/16
3	0.50	13/16	1/4	F300M3X13/16
3.5	0.60	13/16	1/4	F300M3.5X13/16
4	0.70	13/16	1/4	F300M4X13/16
5	0.80	13/16	1/4	F300M5X13/16
5	0.80	1"	3/8	F300M5X1
6	1.00	13/16	1/4	F300M6X13/16
6	1.00	1"	3/8	F300M6X1
6	1.00	1.5/16	7/16	F300M6X1.5/16
7	1.00	13/16	1/4	F300M7X13/16
7	1.00	1"	3/8	F300M7X1
8	1.25	1"	3/8	F300M8X1
8	1.25	1.5/16	7/16	F300M8X1.5/16
9	1.25	1"	3/8	F300M9X1
9	1.25	1.5/16	7/16	F300M9X1.5/16
10	1.50	1"	3/8	F300M10X1
10	1.50	1.5/16	7/16	F300M10X1.5/16
10	1.50	1.1/2	1/2	F300M10X1.1/2
11	1.50	1.5/16	7/16	F300M11X1.5/16
12	1.75	1.5/16	7/16	F300M12X1.5/16
12	1.75	1.1/2	1/2	F300M12X1.1/2
14	2.00	1.5/16	7/16	F300M14X1.5/16
14	2.00	1.1/2	1/2	F300M14X1.1/2
16	2.00	1.1/2	1/2	F300M16X1.1/2
16	2.00	2"	5/8	F300M16X2
18	2.50	1.1/2	1/2	F300M18X1.1/2
18	2.50	2"	5/8	F300M18X2
20	2.50	1.1/2	1/2	F300M20X1.1/2
20	2.50	2"	5/8	F300M20X2
22	2.50	2"	5/8	F300M22X2
24	3.00	2"	5/8	F300M24X2
27	3.00	3"	7/8	F300M27X3
30	3.50	3"	7/8	F300M30X3
36	4.00	3"	7/8	F300M36X3

# F310

- MF Závit. očka stavitelná
- MF Регулируемые плашки
- MF Narzynka nastawna
- MF Závit. očká nastaviteľné

F310	▪	1.1	1.2	1.3	3.1	3.2	3.3	7.1	7.2	7.3						
	•	1.4	2.1	2.2	3.4	4.3	5.1	5.2	5.3	6.1	6.2	6.3	7.4	8.1	8.2	8.3

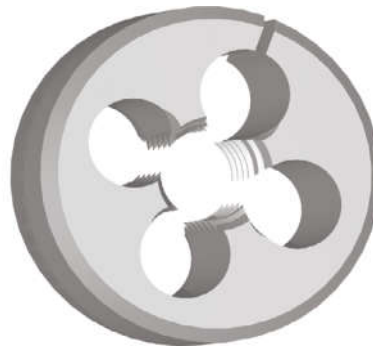
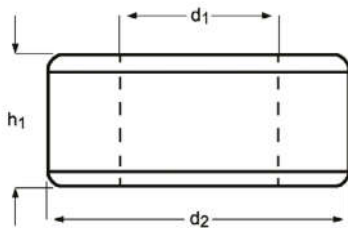
F310

MF

BS  
1127:  
1950

1.75XP

HSS



F310



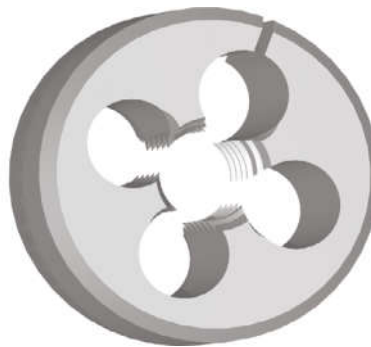
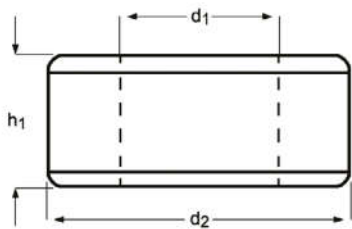
M3 - M30

MF	P mm	d <sub>2</sub> Ø Inch	h <sub>1</sub> Inch	F310
3	0.35	13/16	1/4	F310M3X.35X13/16
4	0.50	13/16	1/4	F310M4X.5X13/16
4	0.75	13/16	1/4	F310M4X.75X13/16
5	0.50	13/16	1/4	F310M5X.5X13/16
5	0.90	13/16	1/4	F310M5X.9X13/16
6	0.75	13/16	1/4	F310M6X.75X13/16
8	0.75	1"	3/8	F310M8X.75X1
8	1.00	1"	3/8	F310M8X1.0X1
9	1.00	1"	3/8	F310M9X1.0X1
10	0.75	1"	3/8	F310M10X.75X1
10	1.00	1"	3/8	F310M10X1.0X1
10	1.25	1"	3/8	F310M10X1.25X1
10	1.25	1.5/16	7/16	F310M10X1.25X1.5/16
12	1.00	1.5/16	7/16	F310M12X1.0X1.5/16
12	1.25	1.5/16	7/16	F310M12X1.25X1.5/16
12	1.50	1.5/16	7/16	F310M12X1.5X1.5/16
14	1.25	1.5/16	7/16	F310M14X1.25X1.5/16
14	1.50	1.5/16	7/16	F310M14X1.5X1.5/16
16	1.00	1.1/2	1/2	F310M16X1.0X1.1/2
16	1.50	1.1/2	1/2	F310M16X1.5X1.1/2
18	1.50	1.1/2	1/2	F310M18X1.5X1.1/2
20	1.00	1.1/2	1/2	F310M20X1.0X1.1/2
20	1.50	2"	5/8	F310M20X1.5X2
20	2.00	1.1/2	1/2	F310M20X2.0X1.1/2
22	1.50	2"	5/8	F310M22X1.5X2
24	1.50	2"	5/8	F310M24X1.5X2
24	2.00	2"	5/8	F310M24X2.0X2
25	1.50	2"	5/8	F310M25X1.5X2
27	2.00	2.1/4	11/16	F310M27X2.0X2.1/4
30	2.00	2.1/4	11/16	F310M30X2.0X2.1/4

- F320**
- UNC Závit. očka staviteľná
  - UNC Регулируемые плашки
  - UNC Narzynka nastawna
  - UNC Závit. očka nastaviteľné

F320	▪	1.1	1.2	1.3	3.1	3.2	3.3	7.1	7.2	7.3						
	•	1.4	2.1	2.2	3.4	4.3	5.1	5.2	5.3	6.1	6.2	6.3	7.4	8.1	8.2	8.3

F320 **UNC** **BS 1127: 1950** **1.75XP** **HSS**   



F320

No.4 - 1.1/4

UNC	TPI	$d_1$ nom mm	$d_2$ Ø Inch	$h_1$ Inch	F320
4	40	2.85	13/16	1/4	F3204-40X13/16
5	40	3.18	13/16	1/4	F3205-40X13/16
6	32	3.51	13/16	1/4	F3206-32X13/16
8	32	4.17	13/16	1/4	F3208-32X13/16
8	32	4.17	1"	3/8	F3208-32X1
10	24	4.83	13/16	1/4	F32010-24X13/16
10	24	4.83	1"	3/8	F32010-24X1
12	24	5.49	13/16	1/4	F32012-24X13/16
1/4	20	6.35	13/16	1/4	F3201/4X13/16
1/4	20	6.35	1"	3/8	F3201/4X1
1/4	20	6.35	1.5/16	7/16	F3201/4X1.5/16
1/4	20	6.35	1.1/2	1/2	F3201/4X1.1/2
5/16	18	7.94	1"	3/8	F3205/16X1
5/16	18	7.94	1.1/2	1/2	F3205/16X1.1/2
3/8	16	9.53	1"	3/8	F3203/8X1
3/8	16	9.53	1.5/16	7/16	F3203/8X1.5/16
3/8	16	9.53	1.1/2	1/2	F3203/8X1.1/2
7/16	14	11.11	1.5/16	7/16	F3207/16X1.5/16
7/16	14	11.11	1.1/2	1/2	F3207/16X1.1/2
1/2	13	12.70	1.5/16	7/16	F3201/2X1.5/16
1/2	13	12.70	1.1/2	1/2	F3201/2X1.1/2
1/2	13	12.70	2"	5/8	F3201/2X2
9/16	12	14.29	1.1/2	1/2	F3209/16X1.1/2
5/8	11	15.88	1.1/2	1/2	F3205/8X1.1/2
5/8	11	15.88	2"	5/8	F3205/8X2
3/4	10	19.05	1.1/2	1/2	F3203/4X1.1/2
3/4	10	19.05	2"	5/8	F3203/4X2
7/8	9	22.23	2"	5/8	F3207/8X2
1"	8	25.40	2"	5/8	F3201X2
1.1/8	7	28.58	3"	7/8	F3201.1/8X3
1.1/4	7	31.75	3"	7/8	F3201.1/4X3

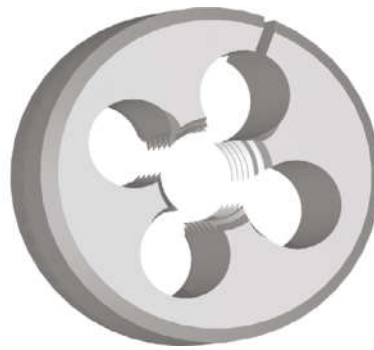
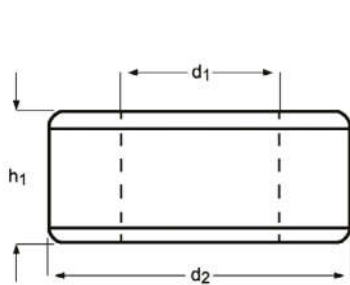


# F330

- UNF Závít. očka staviteľná
- UNF Регулируемые плашки
- UNF Narzynka nastawna
- UNF Závít. očká nastaviteľné

F330	▪	1.1	1.2	1.3	3.1	3.2	3.3	7.1	7.2	7.3						
	•	1.4	2.1	2.2	3.4	4.3	5.1	5.2	5.3	6.1	6.2	6.3	7.4	8.1	8.2	8.3

F330 UNF BS 1127:1950 1.75XP HSS L 120 339

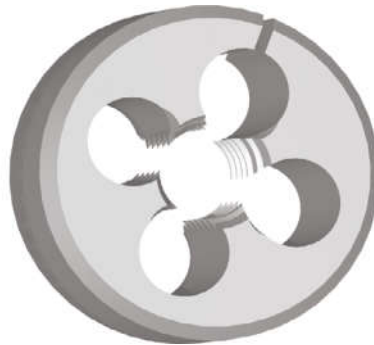
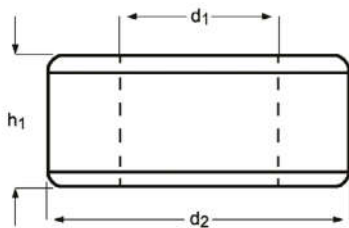


UNF	TPI	d <sub>1</sub> nom mm	d <sub>2</sub> Ø Inch	h <sub>1</sub> Inch	F330
4	48	2.85	13/16	1/4	F3304-48X13/16
5	44	3.18	13/16	1/4	F3305-44X13/16
6	40	3.51	13/16	1/4	F3306-40X13/16
8	36	4.17	13/16	1/4	F3308-36X13/16
10	32	4.83	13/16	1/4	F33010-32X13/16
10	32	4.83	1"	3/8	F33010-32X1
12	28	5.49	13/16	1/4	F33012-28X13/16
1/4	28	6.35	13/16	1/4	F3301/4X13/16
1/4	28	6.35	1"	3/8	F3301/4X1
1/4	28	6.35	1.1/2	1/2	F3301/4X1.1/2
5/16	24	7.94	1"	3/8	F3305/16X1
5/16	24	7.94	1.5/16	7/16	F3305/16X1.5/16
5/16	24	7.94	1.1/2	1/2	F3305/16X1.1/2
3/8	24	9.53	1"	3/8	F3303/8X1
3/8	24	9.53	1.5/16	7/16	F3303/8X1.5/16
3/8	24	9.53	1.1/2	1/2	F3303/8X1.1/2
7/16	20	11.11	1"	3/8	F3307/16X1
7/16	20	11.11	1.5/16	7/16	F3307/16X1.5/16
7/16	20	11.11	1.1/2	1/2	F3307/16X1.1/2
1/2	20	12.70	1.5/16	7/16	F3301/2X1.5/16
1/2	20	12.70	1.1/2	1/2	F3301/2X1.1/2
9/16	18	14.29	1.5/16	7/16	F3309/16X1.5/16
9/16	18	14.29	1.1/2	1/2	F3309/16X1.1/2
5/8	18	15.88	1.1/2	1/2	F3305/8X1.1/2
5/8	18	15.88	2"	5/8	F3305/8X2
3/4	16	19.05	1.1/2	1/2	F3303/4X1.1/2
3/4	16	19.05	2"	5/8	F3303/4X2
7/8	14	22.23	2"	5/8	F3307/8X2
1"	12	25.40	2"	5/8	F3301X2
1.1/8	12	28.58	3"	7/8	F3301.1/8X3
1.1/4	12	31.75	3"	7/8	F3301.1/4X3
1.1/2	12	38.10	3"	7/8	F3301.1/2X3

- F370**
- G(BSP) Závit. očka staviteľná
  - G(BSP) Регулируемые плашки
  - G(BSP) Narzynka nastawna
  - G(BSP) Závit. očká nastaviteľné

<b>F370</b>	▪	1.1	1.2	1.3	3.1	3.2	3.3	7.1	7.2	7.3						
	•	1.4	2.1	2.2	3.4	4.3	5.1	5.2	5.3	6.1	6.2	6.3	7.4	8.1	8.2	8.3

**F370** **G** **BS 1127: 1950** **1.75XP** **HSS**  



G(BSP)	TPI	$d_1$ nom mm	$d_2$ $\emptyset$ Inch	$h_1$ Inch	<b>F370</b>
1/8	28	9.73	1"	3/8	F3701/8X1
1/4	19	13.16	1.5/16	7/16	F3701/4X1.5/16
3/8	19	16.66	1.1/2	1/2	F3703/8X1.1/2
1/2	14	20.96	2"	5/8	F3701/2X2
5/8	14	22.91	2"	5/8	F3705/8X2
3/4	14	26.44	2"	5/8	F3703/4X2
7/8	14	30.20	2.1/4	11/16	F3707/8X2.1/4
1"	11	33.25	2.1/4	11/16	F3701X2.1/4
1.1/4	11	41.91	3"	7/8	F3701.1/4X3
1.1/2	11	47.80	4"	1"	F3701.1/2X4

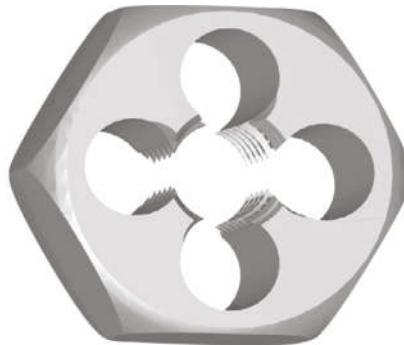
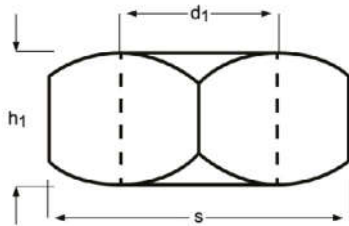
# F202

- M Očka maticová
- M Шестигранные плашки
- M Narzynka sześciokątna
- M Očká maticové

F202	▪	1.1	1.2	1.3	3.1	3.2	3.3	7.1	7.2	7.3						
	•	1.4	2.1	2.2	3.4	4.3	5.1	5.2	5.3	6.1	6.2	6.3	7.4	8.1	8.2	8.3

F202

- M
- DIN 382
- 6g
- 1.75XP
- HSS
- 
- 



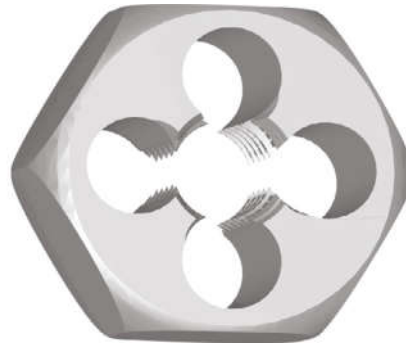
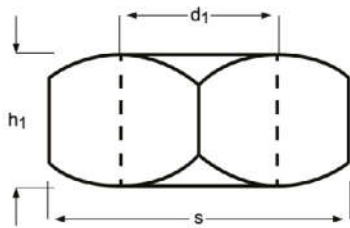
M	P mm	S mm	h <sub>1</sub> mm	F202
3	0.50	19	5	F202M3
4	0.70	19	5	F202M4
5	0.80	19	7	F202M5
6	1.00	19	7	F202M6
7	1.00	22	9	F202M7
8	1.25	22	9	F202M8
10	1.50	27	11	F202M10
12	1.75	36	14	F202M12
14	2.00	36	14	F202M14
16	2.00	41	18	F202M16
18	2.50	41	18	F202M18
20	2.50	41	18	F202M20
22	2.50	50	22	F202M22
24	3.00	50	22	F202M24
27	3.00	60	25	F202M27
30	3.50	60	25	F202M30
36	4.00	60	25	F202M36

## F302

- M Očka maticová
- M Шестигранные плашки
- M Narzynka sześciokątna
- M Očka maticové

F302	▪	1.1	1.2	1.3	3.1	3.2	3.3	7.1	7.2	7.3						
	•	1.4	2.1	2.2	3.4	4.3	5.1	5.2	5.3	6.1	6.2	6.3	7.4	8.1	8.2	8.3

F302 **M** **BS 1127: 1950** **6g** **1.75XP** **HSS**  



M	P mm	S decimal Inch	h <sub>1</sub> Inch	F302
3	0.50	0.7100	1/4	F302M3
4	0.70	0.7100	1/4	F302M4
5	0.80	0.7100	1/4	F302M5
6	1.00	0.7100	1/4	F302M6
7	1.00	0.8200	5/16	F302M7
8	1.25	0.8200	5/16	F302M8
10	1.50	0.9200	3/8	F302M10
11	1.50	1.0100	7/16	F302M11
12	1.75	1.1000	1/2	F302M12
14	2.00	1.3000	5/8	F302M14
16	2.00	1.3000	5/8	F302M16
18	2.50	1.4800	11/16	F302M18
20	2.50	1.4800	11/16	F302M20
22	2.50	1.6700	13/16	F302M22
24	3.00	2.0500	15/16	F302M24
27	3.00	2.2200	1.1/16	F302M27
30	3.50	2.2200	1.1/16	F302M30
33	3.50	2.5800	1.1/8	F302M33
36	4.00	2.7600	1.1/4	F302M36

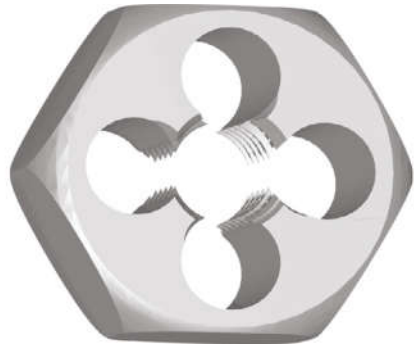
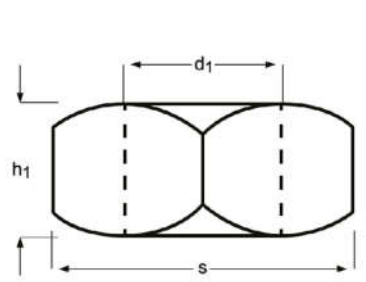
- F312**
- MF Očka maticová
  - MF Шестигранные плашки
  - MF Narzynka drobnozwojna sześciokątna
  - MF Očka maticové

F312

▪	1.1	1.2	1.3	3.1	3.2	3.3	7.1	7.2	7.3						
•	1.4	2.1	2.2	3.4	4.3	5.1	5.2	5.3	6.1	6.2	6.3	7.4	8.1	8.2	8.3

F312

MF	BS 1127: 1950	6g	1.75XP	HSS		
----	---------------------	----	--------	-----	--	--

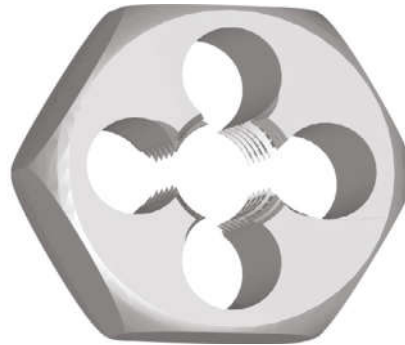
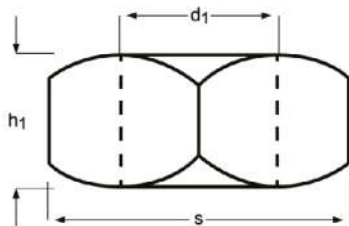


MF	P mm	S decimal Inch	h <sub>1</sub> Inch	F312
8	0.75	0.8200	5/16	F312M8X.75
8	1.00	0.8200	5/16	F312M8X1.0
10	1.00	0.9200	3/8	F312M10X1.0
10	1.25	0.9200	3/8	F312M10X1.25
12	1.00	1.0100	7/16	F312M12X1.0
12	1.25	1.0100	7/16	F312M12X1.25
12	1.50	1.0100	7/16	F312M12X1.5
14	1.50	1.3000	5/8	F312M14X1.5
16	1.50	1.3000	5/8	F312M16X1.5
18	1.50	1.4800	11/16	F312M18X1.5
20	1.50	1.4800	11/16	F312M20X1.5
22	1.50	1.6700	13/16	F312M22X1.5
24	1.50	2.0500	15/16	F312M24X1.5
24	2.00	2.0500	15/16	F312M24X2.0

- F272**
- G(BSP) Závité očko / závité kruhová čelist - matice
  - G(BSP) Шестигранные плашки
  - G(BSP) Narzynka sześciokątna
  - G(BSP) Závité očko - maticové

<b>F272</b>	▪	1.1	1.2	1.3	3.1	3.2	3.3	7.1	7.2	7.3						
	•	1.4	2.1	2.2	3.4	4.3	5.1	5.2	5.3	6.1	6.2	6.3	7.4	8.1	8.2	8.3

**F272** **G** **DIN 382** **Class A** **1.75XP** **HSS**  



G(BSP)	TPI	d <sub>1</sub> nom mm	S mm	h <sub>1</sub> mm	F272
1/8	28	9.73	27	11	F2721/8
1/4	19	13.16	36	10	F2721/4
3/8	19	16.66	41	14	F2723/8
1/2	14	20.96	41	14	F2721/2
3/4	14	26.44	60	18	F2723/4
1"	11	33.25	60	18	F2721
1.1/4	11	41.91	70	20	F2721.1/4
1.1/2	11	47.80	85	22	F2721.1/2