

GT Series Parting and Grooving Tools

Provisional Version



Content

GT Series Parting and Grooving Inserts Identification System	3
GT Series Parting and Grooving Holders Identification System	4
Overview of Parting and Grooving Inserts	5
Parting and Grooving Inserts	6
Parting and Grooving Holders	19



GT Series Parting and Grooving Inserts Identification System

GT D 300 E 020 (R) (06) - MC

①

②

③

④

⑤

⑥

⑦

⑧

① Series

GT

② Number of Edges

S= Single

D= Double

③ Insert Width

Insert Width <10mm
300=3.0mm

Insert Width ≥10mm
1000=10.0mm

④ Insert Seat Size

SSC	Size
B	1.0~1.49mm
C	1.5~1.99mm
D	2.0~2.49mm
E	2.5~2.99mm
F	3~3.99mm
G	4~4.99mm
H	5~5.99mm
J	6~6.99mm

⑤ Corner Radius

020=0.20mm

⑥ Hand of Insert

R=Right Hand

L=Left Hand

□=Neutral

⑦ Lead Angle

06=6°

15=15°

□=0°

⑧ Geometry

First Character	Second Character
F=Low Feed	C=Cutting off
M=Medium Feed	T=Turning
R=High Feed	G=Grooving
O=Specific Optimization	R=Profiling

GT Series Parting and Grooving Holders Identification System

GT E P R 2525 M (45) - H 25 D65 - (S)

① ② ③ ④ ⑤ ⑥ ⑦ ⑧ ⑨ ⑩ ⑪

①Series
GT

②Processing Type
E=External Processing
I=Internal Processing
F=Face Processing

③Holder Style
U=Undercutting
P=Perpendicular
□=Horizontal

④Hand of Tool
R=Right Hand
L=Left Hand
N=Neutral

⑤Shank Size
External Holer: Height*Width
Internal Bar: Min. Processing Diameter*Bar Diameter

⑥Tool Length
F=85mm
JX=120mm
K=125mm
M=150mm
Q=180mm
R=200mm
S=250mm
T=300mm
U=350mm

⑦Holder Angle (U Style)
45=45°
75=75°

⑧Holder Seat Size	
SSC	Size
B	1.0-1.49mm
C	1.5~1.99mm
D	2.0~2.49mm
E	2.5~2.99mm
F	3~3.99mm
G	4~4.99mm
H	5~5.99mm
J	6~6.99mm

⑨Machining Limitations	
Regular Tool	25: CDX=25mm
Tool for Automatic Lathe	D16:CUTDIA =16mm

⑩Min. Diameter of First Cut for Face Grooving
D65:DAXIN=65mm

⑪Additional Information
S= With Reinforcing Rib
C=With High Pressure Cooling
SC=With Reinforcing Rib and High Pressure Cooling

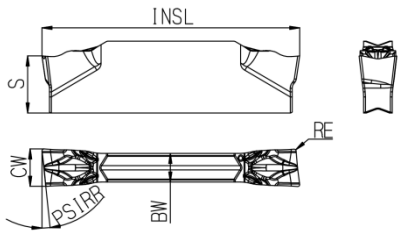
Overview of Parting and Grooving Inserts

Processing Method	Picture	Geometry	Application	Width	Page
Parting		FC	Low Feed Parting	2.0-4.0 (mm)	P6
		MC	Medium Feed Parting	1.5-5.0 (mm)	P7
		RC	High Feed Parting	2.0-6.0 (mm)	P8
		OC	Specific Optimization Parting	2.0 (mm)	P9
Grooving		FG	Low Feed Grooving	1.5-8.0 (mm)	P10-12
		MG	Medium Feed Grooving	2.0-8.0 (mm)	P13
Turning		FT	Low Feed Turning	1.5-8.0 (mm)	P14
		MT	Medium Feed Turning	2.0-8.0 (mm)	P15
		OT	Specific Optimization Turning	3.0-5.0 (mm)	P16
Profiling		MR	Medium Feed Profiling	2.0-8.0 (mm)	P17
		OR	Specific Optimization Profiling	2.0-8.0 (mm)	P18

Parting and Grooving Inserts

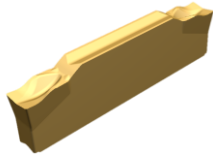
FC

Low Feed Parting Inserts



★ First Choice ☆ Second Choice	P	★	☆	☆			
	M	☆	★				
	K	★					
	N	★					
	S	★	☆				

Ordering Code	SSC	Dimension (mm)						Coated Carbides				
		CW ±0.05	RE ±0.05	INSL	BW	S	PSIR ^{R/L}	GST7115	GST7135	GAT7125	GM1230	GK1115
GTD200C015-FC	C	2.00	0.15	20.0	1.60	4.45	0°	●	●	●		
GTD250D015-FC	D	2.50	0.15	20.0	2.00	4.52	0°		●	●	●	
GTD300E015-FC	E	3.00	0.15	20.0	2.30	4.58	0°		●	●	●	
GTD400F015-FC	F	4.00	0.15	25.0	3.20	4.50	0°		●	○	●	
GTD200C015R06-FC	C	2.00	0.15	21.0	1.60	4.45	6°		●	○	●	
GTD200C015L06-FC	C	2.00	0.15	21.0	1.60	4.45	6°		●	○	●	
GTD250D015R06-FC	D	2.50	0.15	21.0	2.00	4.52	6°		●	●	●	
GTD250D015L06-FC	D	2.50	0.15	21.0	2.00	4.52	6°		●			
GTD300E015R06-FC	E	3.00	0.15	21.0	2.30	4.55	6°		●	●	●	
GTD300E015L06-FC	E	3.00	0.15	21.0	2.30	4.55	6°		●	●	●	
GTD400F015R06-FC	F	4.00	0.15	26.0	3.20	4.50	6°		●	○	●	
GTD400F015L06-FC	F	4.00	0.15	26.0	3.20	4.50	6°		●			

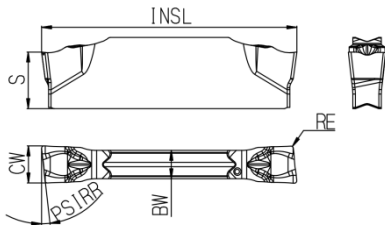


● Stock ○ Available Upon Order

Parting and Grooving Inserts

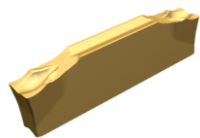
MC

Medium Feed Parting Inserts



★ First Choice ☆ Second Choice	P	★	☆	☆		
	M	☆	★			
	K	★				
	N	★				
	S	★	☆			

Ordering Code	SSC	Dimension (mm)						Coated Carbides				
		CW ±0.05	RE ±0.05	INSL	BW	S	PSIR ^{R/L}	GST7115	GST7135	GAT7125	GM1230	GK1115
GTD150B020-MC	B	1.50	0.20	14.0	1.26	4.21	0°	●	●	●		
GTD200C020-MC	C	2.00	0.20	20.0	1.60	4.45	0°	●	●	●		
GTD250D020-MC	D	2.50	0.20	20.0	2.00	4.53	0°	●	●	●		
GTD300E020-MC	E	3.00	0.20	20.0	2.30	4.55	0°	●	●	●		
GTD400F020-MC	F	4.00	0.20	25.0	3.20	4.50	0°	●	●	●		
GTD500G020-MC	G	5.00	0.20	25.0	4.20	4.58	0°	●	○	●		
GTD200C020R06-MC	C	2.00	0.20	20.4	1.60	4.45	6°	●	●	●		
GTD200C020L06-MC	C	2.00	0.20	20.4	1.60	4.45	6°	●	●	●		
GTD200C002L15-MC	C	2.00	0.02	21.5	1.60	4.47	15°	●	○			
GTD200C002R15-MC	C	2.00	0.02	21.5	1.60	4.47	15°	●	○			
GTD200C020R15-MC	C	2.00	0.20	20.8	1.60	4.44	15°	●	○			
GTD200C020L15-MC	C	2.00	0.20	20.8	1.60	4.44	15°	●	○			
GTD250D020R06-MC	D	2.50	0.20	20.5	2.00	4.53	6°	●	○	●		
GTD250D020L06-MC	D	2.50	0.20	20.5	2.00	4.53	6°	●	○	●		
GTD300E020R06-MC	E	3.00	0.20	20.7	2.30	4.58	6°	●	●	●		
GTD300E020L06-MC	E	3.00	0.20	20.7	2.30	4.58	6°	●	●	●		
GTD300E002L15-MC	E	3.00	0.02	21.6	2.30	4.61	15°	●	○			
GTD300E002R15-MC	E	3.00	0.02	21.6	2.30	4.61	15°	●	○			
GTD300E020L15-MC	E	3.00	0.20	20.9	2.30	4.58	15°	●	○			
GTD300E020R15-MC	E	3.00	0.20	20.9	2.30	4.58	15°	●	○			
GTD400F020R06-MC	F	4.00	0.20	25.6	3.20	4.50	6°	●	●	●		
GTD400F020L06-MC	F	4.00	0.20	25.6	3.20	4.50	6°	●	●	●		
GTD500G020R06-MC	G	5.00	0.20	25.9	4.20	4.58	6°	●		●		
GTD500G020L06-MC	G	5.00	0.20	25.9	4.20	4.58	6°	○		○		

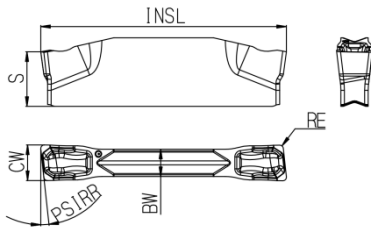


● Stock ○ Available Upon Order

Parting and Grooving Inserts

RC

High Feed Parting Inserts



★ First Choice ☆ Second Choice	P	★	☆	☆		
	M	☆	★			
	K	★				
	N	★				
	S	★	☆			

Ordering Code	SSC	Dimension (mm)						Coated Carbides				
		CW ±0.05	RE ±0.05	INSL	BW	S	PSIR ^{R/L}	GST7115	GST7135	GAT7125	GM1230	GK1115
GTD200C020-RC	C	2.00	0.20	20.0	1.60	4.45	0°	●	●	●		
GTD250D030-RC	D	2.50	0.30	20.0	2.00	4.52	0°	●	●	●		
GTD300E030-RC	E	3.00	0.30	20.0	2.30	4.58	0°	●	●	●		
GTD400F030-RC	F	4.00	0.30	25.0	3.20	4.50	0°	●	○	●		
GTD500G040-RC	G	5.00	0.40	25.0	4.20	4.58	0°	●	○	●		
GTD600H040-RC	H	6.00	0.40	25.0	5.20	4.67	0°	●	○	●		
GTD200C020R06-RC	C	2.00	0.20	20.6	1.60	4.45	6°	●	●	●		
GTD200C020L06-RC	C	2.00	0.20	20.6	1.60	4.45	6°	●	●	●		
GTD250D030R06-RC	D	2.50	0.30	20.6	2.00	4.54	6°	●	●	●		
GTD250D030L06-RC	D	2.50	0.30	20.6	2.00	4.54	6°	●	●	●		
GTD300E030R06-RC	E	3.00	0.30	20.7	2.30	4.58	6°	●	●	●		
GTD300E030L06-RC	E	3.00	0.30	20.7	2.30	4.58	6°	●	●	●		
GTD400F030R06-RC	F	4.00	0.30	25.9	3.20	4.50	6°	●	○	●		
GTD400F030L06-RC	F	4.00	0.30	25.9	3.20	4.50	6°	●		●		
GTD500G040R06-RC	G	5.00	0.40	25.9	4.20	4.60	6°	●		●		
GTD500G040L06-RC	G	5.00	0.40	25.9	4.20	4.60	6°	●		●		

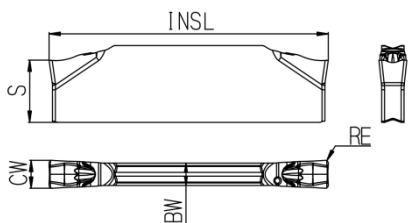


● Stock ○ Available Upon Order

Parting and Grooving Inserts

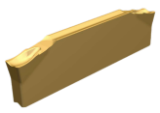
OC

Specific Optimization Parting Inserts



★ First Choice ☆ Second Choice	P	★	☆			
	M	☆	★			
	K	★				
	N	★				
	S	★	☆			

Ordering Code	SSC	Dimension (mm)						Coated Carbides					
		CW ±0.05	RE ±0.05	INSL	BW	S	PSIR ^R /L	GST7115	GST7135	GAT7125	GM1230	GK1115	
GTD200C020-OC	C	2.00	0.20	20.0	1.60	4.45	0°		●	●			

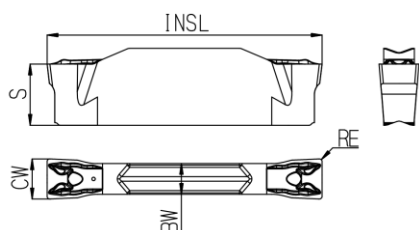


● Stock ○ Available Upon Order

Parting and Grooving Inserts

FG

Low Feed Grooving Inserts



★ First Choice ☆ Second Choice	P	☆	★		☆			
	M	☆	★					
	K	☆	★					
	N	☆	★					
	S	☆	★					

Ordering Code	SSC	Dimension (mm)					Coated Carbides					
		CW ±0.02	RE ±0.05	INSL	BW	S	GST7115	GST7135	GAT7125	GM1230	GK1115	
GTD150B010-FG	B	1.50	0.10	14.8	1.15	4.21	●	●				
GTD198C020-FG	C	1.98	0.20	20.7	1.60	4.45		●				
GTD200C020-FG	C	2.00	0.20	20.7	1.60	4.45	●	●		●		
GTD200C040-FG	C	2.00	0.40	20.7	1.60	4.45	●	●				
GTD224C020-FG	C	2.24	0.20	20.7	1.60	4.45	○	●				
GTD239D020-FG	D	2.39	0.20	20.7	2.00	4.50	○	○				
GTD239D040-FG	D	2.39	0.40	20.7	2.00	4.59	○	○				
GTD246D030-FG	D	2.46	0.30	20.7	2.00	4.59	○	○				
GTD267D020-FG	D	2.67	0.20	20.7	2.00	4.68		○				
GTD279D030-FG	D	2.79	0.30	20.7	2.00	4.68	●	●				
GTD300E020-FG	E	3.00	0.20	20.7	2.30	4.58	●	●		●		
GTD300E030-FG	E	3.00	0.30	20.7	2.30	4.58	●	●				
GTD300E040-FG	E	3.00	0.40	20.7	2.30	4.58	●	●				
GTD310E020-FG	E	3.10	0.20	20.7	2.30	4.58		●				
GTD318E020-FG	E	3.18	0.20	20.7	2.30	4.58	●	●				
GTD318E040-FG	E	3.18	0.40	20.7	2.30	4.58		●				
GTD318E080-FG	E	3.18	0.80	20.7	2.30	4.58	●	●				
GTD361E030-FG	E	3.61	0.30	20.7	2.30	4.58	●	●				
GTD396F020-FG	F	3.96	0.20	25.7	3.20	4.50	○	○				
GTD396F040-FG	F	3.96	0.40	25.7	3.20	4.50		○				
GTD396F080-FG	F	3.96	0.80	25.7	3.20	4.50	○	○				
GTD400F020-FG	F	4.00	0.20	25.7	3.20	4.50	●	●		●		
GTD400F040-FG	F	4.00	0.40	25.7	3.20	4.50	●	●				
GTD452F020-FG	F	4.52	0.20	25.7	3.20	4.50		●				

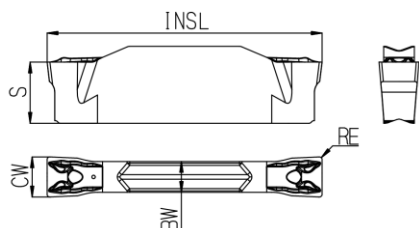


● Stock ○ Available Upon Order

Parting and Grooving Inserts

FG

Low Feed Grooving Inserts



★ First Choice ☆ Second Choice	P	☆	★		☆		
	M	☆	★				
	K	☆	★				
	N	☆	★				
	S	☆	★				

Ordering Code	SSC	Dimension (mm)					Coated Carbides					
		CW ±0.02	RE ±0.05	INSL	BW	S	GST7115	GST7135	GAT7125	GM1230	GK1115	
GTD470F050-FG	F	4.70	0.50	25.7	3.20	4.50		●				
GTD475F040-FG	F	4.75	0.40	25.7	3.20	4.50		●				
GTD475F080-FG	F	4.75	0.80	25.7	3.20	4.50		●				
GTD480F050-FG	F	4.80	0.50	25.7	3.20	4.50		●				
GTD500F020-FG	F	5.00	0.20	25.7	3.20	4.50	●	●		○		
GTD500F040-FG	F	5.00	0.40	25.7	3.20	4.50	●	●				
GTD541G020-FG	G	5.41	0.20	25.7	4.20	4.58		○				
GTD556G050-FG	G	5.56	0.50	25.7	4.20	4.58	○	○				
GTD600H020-FG	H	6.00	0.20	25.7	5.20	4.67	●	●		○		
GTD635H040-FG	H	6.35	0.40	25.7	5.20	4.67		○				
GTD635H050-FG	H	6.35	0.50	25.7	5.20	4.67		○				
GTD635H080-FG	H	6.35	0.80	25.7	5.20	4.67		○				
GTD714H080-FG	H	7.14	0.80	25.7	5.20	4.67		○				
GTD792J080-FG	J	7.92	0.80	31.0	6.60	6.39		○				
GTD800J020-FG	J	8.00	0.20	31.0	6.60	6.39		●		●		

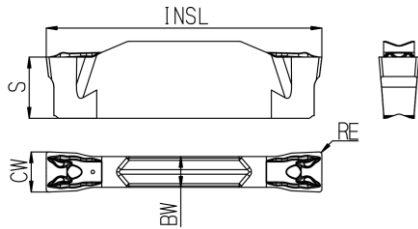


● Stock ○ Available Upon Order

Parting and Grooving Inserts

FG

Low Feed Grooving Inserts (for circlip grooves)



★ First Choice ☆ Second Choice	P	☆	★								
	M	☆	★								
	K	☆	★								
	N	☆	★								
	S	☆	★								

Ordering Code	SSC	Dimension (mm)					Coated Carbides				
		$CW_{+0.09}^{+0.13}$	$RE_{\pm 0.05}$	INSL	BW	S	GST7115	GST7135	GAT7125	GM1230	GK1115
GTD185C010-FG	C	1.85	0.1	20.7	1.6	4.45	●	●			
GTD215C010-FG	C	2.15	0.1	20.7	1.6	4.45		●			
GTD265D020-FG	D	2.65	0.2	20.7	2	4.68		○			
GTD315E020-FG	E	3.15	0.2	20.7	2.3	4.58		●			
GTD415F020-FG	F	4.15	0.2	25.7	3.2	4.5		●			
GTD515G020-FG	G	5.15	0.2	25.7	4.2	4.58		●			

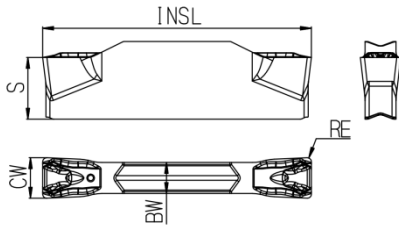


● Stock ○ Available Upon Order

Parting and Grooving Inserts

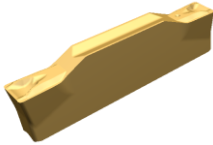
MG

Medium Feed Grooving Inserts



★ First Choice ☆ Second Choice	P	★	☆	☆	☆	
	M	★	☆			
	K	☆			★	
	N	★				
	S	★	☆			

Ordering Code	SSC	Dimension (mm)					Coated Carbides				
		CW ±0.05	RE ±0.05	INSL	BW	S	GST7115	GST7135	GAT7125	GM1230	GK1115
GTD200C020-MG	C	2.00	0.20	20.0	1.60	4.45	●	●	●	●	
GTD239C020-MG	C	2.39	0.20	20.0	1.60	4.45	●			○	●
GTD300E030-MG	E	3.00	0.30	20.0	2.30	4.58	●	●	●	●	
GTD318E030-MG	E	3.18	0.30	20.0	2.30	4.58	●	○	○	●	
GTD400F030-MG	F	4.00	0.30	25.0	3.20	4.50	●	○	○	●	
GTD475G030-MG	G	4.75	0.30	25.0	4.20	4.58	●			○	●
GTD500G040-MG	G	5.00	0.40	25.0	4.20	4.58	●	●	●	●	
GTD600H040-MG	H	6.00	0.40	25.0	5.20	4.67	●	●	●	●	
GTD635H030-MG	H	6.35	0.30	25.0	5.20	4.67	●			○	●
GTD792J030-MG	J	7.92	0.30	30.0	6.60	6.39	●				
GTD800J050-MG	J	8.00	0.50	30.0	6.60	6.39	●			○	●

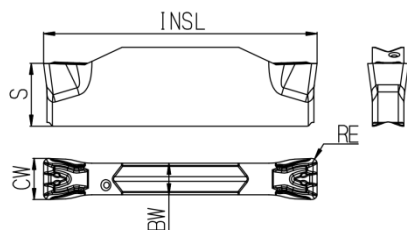


● Stock ○ Available Upon Order

Parting and Grooving Inserts

FT

Low Feed Turning Inserts



★ First Choice ☆ Second Choice	P	☆	★		☆	☆	
	M	☆	★				
	K	☆	☆			★	
	N	★	☆				
	S	☆	★				

Ordering Code	SSC	Dimension (mm)					Coated Carbides					
		CW ±0.05	RE ±0.05	INSL	BW	S	GST7115	GST7135	GAT7125	GM1230	GK1115	
GTD150B020-FT	B	1.50	0.20	14.0	1.26	4.21		●				
GTD200C020-FT	C	2.00	0.20	20.0	1.60	4.45	●	●				
GTD250D020-FT	D	2.50	0.20	20.0	2.00	4.53	●	●				
GTD300E020-FT	E	3.00	0.20	20.0	2.30	4.58	●	●		●	●	
GTD300E040-FT	E	3.00	0.40	20.0	2.30	4.58	●	●				
GTD400F020-FT	F	4.00	0.20	25.0	3.20	4.50	●	●				
GTD400F040-FT	F	4.00	0.40	25.0	3.20	4.50	●	●		●	●	
GTD400F080-FT	F	4.00	0.80	25.0	3.20	4.50	●	●				
GTD500G040-FT	G	5.00	0.40	25.0	4.20	4.59	●	●		●	●	
GTD500G080-FT	G	5.00	0.80	25.0	4.20	4.59	●	●				
GTD600H040-FT	H	6.00	0.40	25.0	5.20	4.68	●	●		●	●	
GTD600H080-FT	H	6.00	0.80	25.0	5.20	4.68	●	●				
GTD600H100-FT	H	6.00	1.00	25.0	5.20	4.68	●	●				
GTD800J040-FT	J	8.00	0.40	30.0	6.60	6.39	●	●				
GTD800J080-FT	J	8.00	0.80	30.0	6.60	6.39	●	●		●	●	
GTD800J120-FT	J	8.00	1.20	30.0	6.60	6.39	●	●				

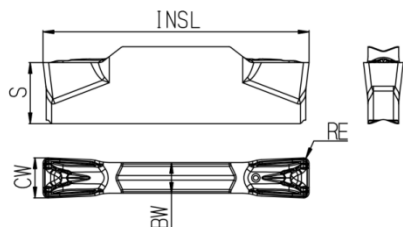


● Stock ○ Available Upon Order

Parting and Grooving Inserts

MT

Medium Feed Turning Inserts



★ First Choice ☆ Second Choice	P	☆	★	☆	☆	☆	
	M	☆	★	☆			
	K	☆	☆			★	
	N	★	☆				
	S	☆	★	☆			

Ordering Code	SSC	Dimension (mm)					Coated Carbides				
		CW ±0.05	RE ±0.05	INSL	BW	S	GST7115	GST7135	GAT7125	GM1230	GK1115
GTD200C020-MT	C	2.00	0.20	20.0	1.60	4.45	●	●	●	●	●
GTD300E040-MT	E	3.00	0.40	20.0	2.30	4.58	●	●	●	●	●
GTD400F040-MT	F	4.00	0.40	25.0	3.20	4.50	●	●	●	●	●
GTD400F080-MT	F	4.00	0.80	25.0	3.20	4.50	●	●	○	○	●
GTD500G040-MT	G	5.00	0.40	25.0	4.20	4.59	●	●	●	●	●
GTD500G080-MT	G	5.00	0.80	25.0	4.20	4.59	●	●	○	○	●
GTD600H040-MT	H	6.00	0.40	25.0	5.20	4.68	●	●		○	●
GTD600H080-MT	H	6.00	0.80	25.0	5.20	4.68	●	●	●	●	●
GTD800J080-MT	J	8.00	0.80	30.0	6.60	6.39	●	●	○	○	●
GTD800J120-MT	J	8.00	1.20	30.0	6.60	6.39		●		○	●

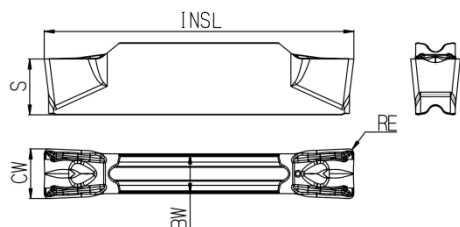


● Stock ○ Available Upon Order

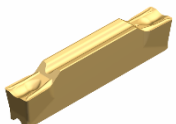
Parting and Grooving Inserts

OT

Specific Optimization Turning Inserts



★ First Choice ☆ Second Choice	P	☆	★			☆	
	M	☆	★				
	K	☆	☆			★	
	N	★	☆				
	S	☆	★				

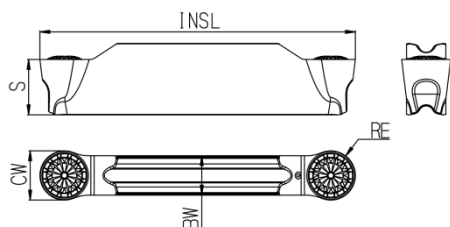
Ordering Code	SSC	Dimension (mm)					Coated Carbides				
		CW ±0.05	RE ±0.05	INSL	BW	S	GST7115	GST7135	GAT7125	GM1230	GK1115
 GTD300E030-OT	E	3.00	0.30	20.0	2.30	4.58	○	○			○
GTD400F040-OT	F	4.00	0.40	25.0	3.20	4.50	●	●			○
GTD500G040-OT	G	5.00	0.40	25.0	4.20	4.58	●	●			○

● Stock ○ Available Upon Order

Parting and Grooving Inserts

MR

Medium Feed Profiling Inserts



★ First Choice ☆ Second Choice	P	☆	★		☆	☆	
	M	☆	★				
	K	☆	☆			★	
	N	★	☆				
	S	☆	★				

Ordering Code	SSC	Dimension (mm)					Coated Carbides				
		CW ±0.05	RE ±0.05	INSL	BW	S	GST7115	GST7135	GAT7125	GM1230	GK1115
GTD200C100-MR	C	2.00	1.00	20.6	1.60	4.45	●	●		●	●
GTD300D150-MR	D	3.00	1.50	20.7	2.00	4.53	●	●		●	●
GTD318D159-MR	D	3.18	1.59	20.7	2.00	4.53	○	○		○	○
GTD400E200-MR	E	4.00	2.00	20.0	2.30	4.58	●	●		●	●
GTD400F200-MR	F	4.00	2.00	25.7	3.20	4.50	●	●		●	●
GTD475F238-MR	F	4.75	2.38	25.7	3.20	4.50		○			○
GTD500F250-MR	F	5.00	2.50	25.7	3.20	4.50	●	●		●	●
GTD600G300-MR	G	6.00	3.00	25.7	4.20	4.58	●	●		●	●
GTD635G318-MR	G	6.35	3.18	25.7	4.20	4.58		●			●
GTD800J400-MR	J	8.00	4.00	32.1	6.25	6.39	●	●		●	●

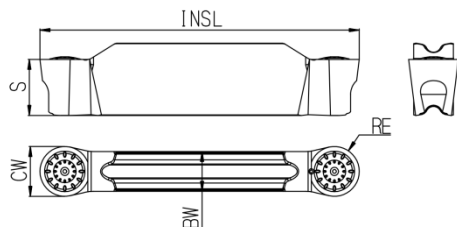


● Stock ○ Available Upon Order

Parting and Grooving Inserts

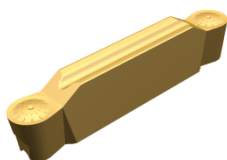
OR

Specific Optimization Profiling Inserts



★ First Choice ☆ Second Choice	P	☆	★		☆		
	M	☆	★				
	K	★	☆				
	N	★	☆				
	S	☆	★				

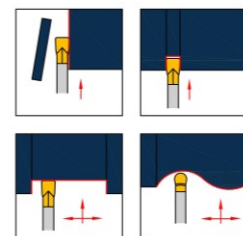
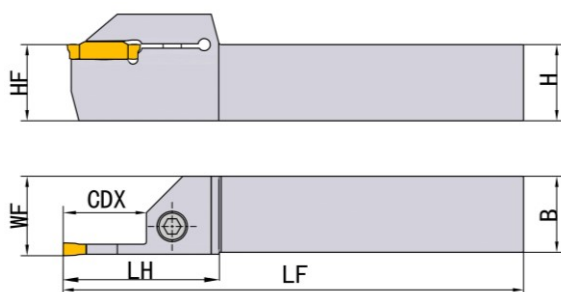
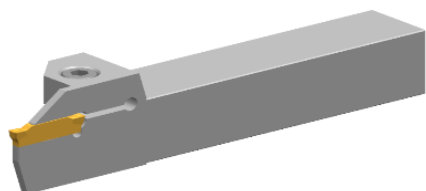
Ordering Code	SSC	Dimension (mm)					Coated Carbides				
		CW ±0.02	RE ±0.05	INSL	BW	S	GST7115	GST7135	GAT7125	GM1230	GK1115
GTD200C100-OR	C	2.00	1.00	20.6	1.60	4.45	●	●		●	
GTD239C120-OR	C	2.39	1.20	20.6	1.60	4.45		●			
GTD300D150-OR	D	3.00	1.50	20.7	2.00	4.53	●	●		●	
GTD318D159-OR	D	3.18	1.59	20.7	2.00	4.53	●	●			
GTD396F198-OR	F	3.96	1.98	25.7	3.20	4.50		●			
GTD400F200-OR	F	4.00	2.00	25.7	3.20	4.50	●	●		●	
GTD450F225-OR	F	4.50	2.25	25.7	3.20	4.50		○			
GTD475F238-OR	F	4.75	2.38	25.7	3.20	4.50	○	○			
GTD500F250-OR	F	5.00	2.50	25.7	3.20	4.50	●	●		●	
GTD600G300-OR	G	6.00	3.00	25.7	4.20	4.58	●	●		●	
GTD635G318-OR	G	6.38	3.18	25.7	4.20	4.58		○			
GTD714H357-OR	H	7.14	3.57	25.0	5.20	4.67		○			
GTD800J400-OR	J	8.00	4.00	32.1	6.25	6.39	●	●		●	





● Stock ○ Available Upon Order

Parting and Grooving Holders-GT series

External Holders



The picture is right hand holder

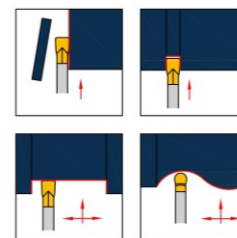
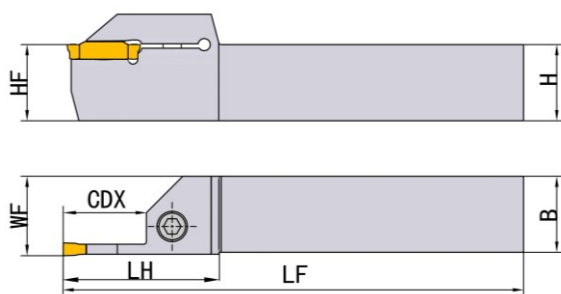
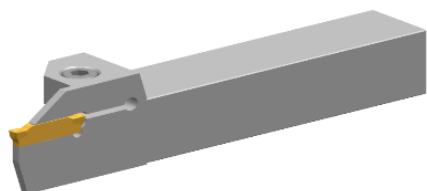
Ordering Code	Dimension (mm)						SSC	Screw 	Wrench 	Stock	
	CDX	H=HF	B	LF	LH	WF				R	L
GTER/L1616H-B08	8	16	16	100	29	17	B	SCAM050200H	TH40LH	●	●
GTER/L1616H-B15	15	16	16	100	36.5	17	B	SCAM050200H	TH40LH	●	●
GTER/L2020K-B08	8	20	20	125	29	21	B	SCAM050200H	TH40LH	●	●
GTER/L2020K-B15	15	20	20	125	36.5	21	B	SCAM050200H	TH40LH	●	●
GTER/L2525M-B08	8	25	25	150	29	26	B	SCAM060200H	TH50LH	●	●
GTER/L2525M-B15	15	25	25	150	36.5	26	B	SCAM060200H	TH50LH	●	●
GTER/L1616H-C08	8	16	16	100	29	17	C	SCAM050200H	TH40LH	●	●
GTER/L1616H-C15	15	16	16	100	36.5	17	C	SCAM050200H	TH40LH	●	●
GTER/L2020K-C17	17	20	20	125	44.8	21	C	SCAM050200H	TH40LH	○	○
GTER/L2020K-C08	8	20	20	125	29	21	C	SCAM050200H	TH40LH	●	●
GTER/L2020K-C15	15	20	20	125	36.5	21	C	SCAM050200H	TH40LH	●	●
GTER/L2525M-C08	8	25	25	150	29	26	C	SCAM060200H	TH50LH	●	●
GTER/L2525M-C15	15	25	25	150	36.5	26	C	SCAM060200H	TH50LH	●	●
GTER/L1616H-D10	10	16	16	100	32	17	D	SCAM050200H	TH40LH	●	●
GTER/L1616H-D20	20	16	16	100	44.8	17	D	SCAM050200H	TH40LH	○	○
GTER/L2020K-D10	10	20	20	125	32	21	D	SCAM050200H	TH40LH	●	●
GTER/L2020K-D20	20	20	20	125	44.8	21	D	SCAM050200H	TH40LH	●	●
GTER/L2525M-D10	10	25	25	150	32	26	D	SCAM060200H	TH50LH	●	●
GTER/L2525M-D20	20	25	25	150	44.8	26	D	SCAM060200H	TH50LH	●	○
GTER/L3225P-D20	20	32	25	170	44.8	26	D	SCAM060200H	TH50LH	●	○
GTER/L3232P-D20	20	32	32	170	44.8	33	D	SCAM060200H	TH50LH	●	○
GTER/L1616H-E20	20	16	16	100	44.8	17	E	SCAM050200H	TH40LH	○	○
GTER/L1616H-E10	10	16	16	100	32	17	E	SCAM050200H	TH40LH	●	●
GTER/L2020K-E10	10	20	20	125	32	21	E	SCAM050200H	TH40LH	●	●

Note: SCAM060200H stands for M6X20



● Stock ○ Available Upon Order

Parting and Grooving Holders-GT series

External Holders



The picture is right hand holder

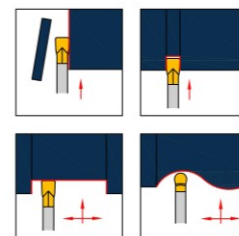
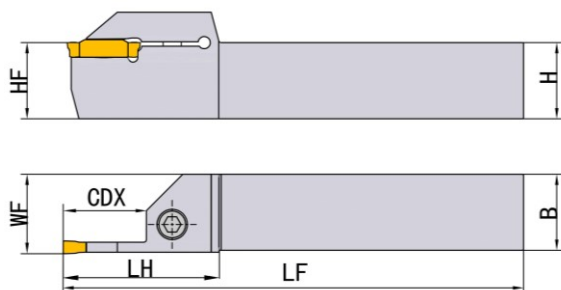
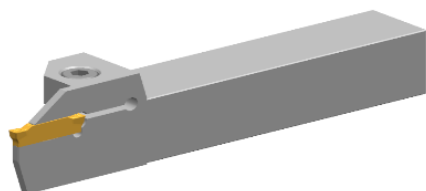
Ordering Code	Dimension (mm)						SSC	Screw 	Wrench 	Stock	
	CDX	H=HF	B	LF	LH	WF				R	L
GTER/L2020K-E20	20	20	20	125	44.8	21	E	SCAM050200H	TH40LH	●	●
GTER/L2525M-E10	10	25	25	150	32	26	E	SCAM060200H	TH50LH	●	●
GTER/L2525M-E20	20	25	25	150	44.8	26	E	SCAM060200H	TH50LH	●	●
GTER/L3232P-E20	20	32	32	170	44.8	33	E	SCAM060200H	TH50LH	●	●
GTER/L3232P-E10	10	32	32	170	32	33	E	SCAM060200H	TH50LH	●	○
GTER/L3225P-E10	10	32	25	170	32	26	E	SCAM060200H	TH50LH	○	○
GTER/L3225P-E20	20	32	25	170	44.8	26	E	SCAM060200H	TH50LH	○	○
GTER/L1616H-F13	13	16	16	100	36.5	17	F	SCAM050200H	TH40LH	●	●
GTER/L1616H-F25	25	16	16	100	47	17	F	SCAM050200H	TH40LH	○	○
GTER/L2020K-F13	13	20	20	125	36.5	21	F	SCAM050200H	TH40LH	●	●
GTER/L2020K-F25	25	20	20	125	47	21	F	SCAM050200H	TH40LH	●	●
GTER/L2525M-F13	13	25	25	150	36.5	26	F	SCAM060200H	TH50LH	●	●
GTER/L2525M-F25	25	25	25	150	47	26	F	SCAM060200H	TH50LH	●	●
GTER/L3232P-F25	25	32	32	170	47	33	F	SCAM060200H	TH50LH	●	●
GTER/L3232P-F13	13	32	32	170	36.5	33	F	SCAM060200H	TH50LH	●	○
GTER/L3225P-F13	13	32	25	170	36.5	26	F	SCAM060200H	TH50LH	○	○
GTER/L3225P-F25	25	32	25	170	47	26	F	SCAM060200H	TH50LH	○	○
GTER/L2020K-G13	13	20	20	125	36.5	21	G	SCAM050200H	TH40LH	●	○
GTER/L2020K-G22	22	20	20	125	44.8	21	G	SCAM050200H	TH40LH	●	○
GTER/L2525M-G13	13	25	25	150	36.5	26	G	SCAM060200H	TH50LH	●	●
GTER/L2525M-G32	32	25	25	150	54.8	26	G	SCAM060200H	TH50LH	●	○
GTER/L2525M-G25	25	25	25	150	47	26	G	SCAM060200H	TH50LH	●	●
GTER/L3225P-G13	13	32	25	170	36.5	26	G	SCAM060200H	TH50LH	●	○

Note: SCAM060200H stands for M6X20



● Stock ○ Available Upon Order

Parting and Grooving Holders-GT series

External Holders



The picture is right hand holder

Ordering Code	Dimension (mm)						SSC	Screw 	Wrench 	Stock	
	CDX	H=HF	B	LF	LH	WF				R	L
GTER/L3225P-G32	32	32	25	170	54.8	26	G	SCAM060200H	TH50LH	●	○
GTER/L3232P-G13	13	32	32	170	36.5	33	G	SCAM060200H	TH50LH	●	○
GTER/L3232P-G32	32	32	32	170	54.8	33	G	SCAM060200H	TH50LH	●	○
GTER/L2525M-H16	16	25	25	150	44.8	26	H	SCAM060200H	TH50LH	●	○
GTER/L2525M-H32	32	25	25	150	54.8	26	H	SCAM060200H	TH50LH	●	●
GTER/L3225P-H16	16	32	25	170	44.8	26	H	SCAM060200H	TH50LH	●	○
GTER/L3225P-H32	32	32	25	170	54.8	26	H	SCAM060200H	TH50LH	●	○
GTER/L3232P-H16	16	32	32	170	44.8	33	H	SCAM060200H	TH50LH	●	●
GTER/L3232P-H32	32	32	32	170	54.8	33	H	SCAM060200H	TH50LH	●	●
GTER/L2525M-J16	16	25	25	150	44.8	26	J	SCAM080260H	TH60LH	○	○
GTER/L2525M-J24	24	25	25	150	54.8	26	J	SCAM080260H	TH60LH	●	●
GTER/L2525M-J40	40	25	25	150	62.8	26	J	SCAM080260H	TH60LH	●	●
GTER/L3232P-J32	32	32	32	170	54.8	33	J	SCAM080260H	TH60LH	○	●
GTER/L3232P-J24	24	32	32	170	54.8	33	J	SCAM080260H	TH60LH	●	○
GTER/L3232P-J40	40	32	32	170	62.8	33	J	SCAM080260H	TH60LH	●	○

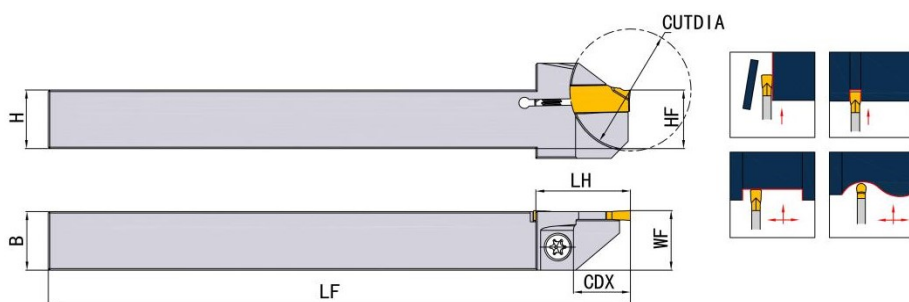
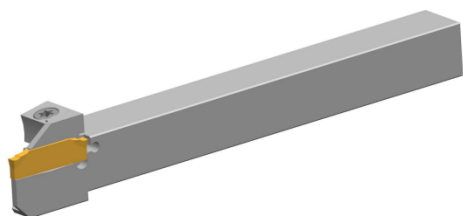
Note: SCAM060200H stands for M6X20

● Stock ○ Available Upon Order



Parting and Grooving Holders-GT series

External Holders

- for Automatic Lathe



The picture is right hand holder

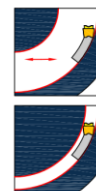
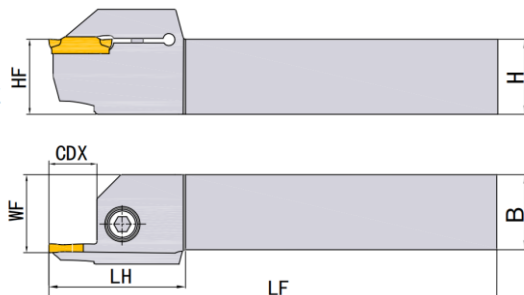
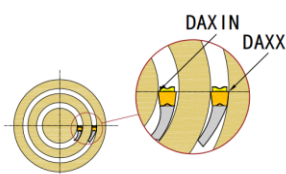
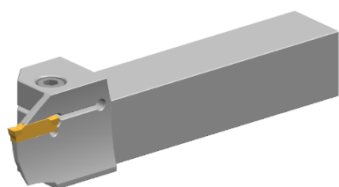
Ordering Code	Dimension (mm)							SSC	Screw 	Wrench 	Stock	
	CDX	H=HF	B	LF	LH	WF	CUTDIA				R	L
GTER/L1212F-BD16-S	8	12	12	85	19.5	12.45	16	B	SI60M040160-05718H	TT15PH	●	●
GTER/L1212JX-BD16-S	8	12	12	120	19.5	12.45	16	B	SI60M040160-05718H	TT15PH	●	●
GTER/L1212F-BD24-S	12	12	12	85	19.5	12.15	24	B	SI60M040160-05718H	TT15PH	●	●
GTER/L1212JX-BD24-S	12	12	12	120	19.5	12.15	24	B	SI60M040160-05718H	TT15PH	●	●
GTER/L1616JX-BD16-S	8	16	16	120	19.5	11.90	16	B	SI60M040160-05718H	TT15PH	○	○
GTER/L1010F-CD24-S	12	10	10	85	19.5	10.20	24	C	SI60M040160-05718H	TT15PH	●	●
GTER/L1212F-CD24-S	12	12	12	85	19.5	12.20	24	C	SI60M040160-05718H	TT15PH	●	●
GTER/L1212JX-CD24-S	12	12	12	120	19.5	12.20	24	C	SI60M040160-05718H	TT15PH	●	●
GTER/L1616JX-CD16-S	8	16	16	120	24.5	16.00	16	C	SI60M040160-05718H	TT15PH	●	●
GTER/L1616JX-CD24-S	12	16	16	120	24.5	16.00	24	C	SI60M040160-05718H	TT15PH	●	●
GTER/L1616JX-CD32-S	16	16	16	120	24.5	16.20	32	C	SI60M040160-05718H	TT15PH	●	●
GTER/L1212F-DD24-S	12	12	12	85	19.5	12.25	24	D	SI60M040160-05718H	TT15PH	○	○
GTER/L1212JX-DD24-S	12	12	12	120	19.5	12.25	24	D	SI60M040160-05718H	TT15PH	●	●
GTER/L1616JX-DD32-S	16	16	16	120	24.5	16.25	32	D	SI60M040160-05718H	TT15PH	○	○
GTER/L1212JX-ED24-S	12	12	12	120	19.5	12.30	24	E	SI60M040160-05718H	TT15PH	●	●
GTER/L1616JX-ED16-S	8	16	16	120	24.5	16.30	16	E	SI60M040160-05718H	TT15PH	●	●
GTER/L1616JX-ED32-S	16	16	16	120	24.5	16.30	32	E	SI60M040160-05718H	TT15PH	●	●
GTER/L1616JX-ED34-S	17	16	16	120	24.5	16.30	34	E	SI60M040160-05718H	TT15PH	●	●
GTER/L1616JX-ED38-S	19	16	16	120	29	16.30	38	E	SI60M040160-05718H	TT15PH	○	○
GTER/L2012JX-ED42-S	21	20	12	120	31	16.30	42	E	SI60M050160-07214H	TT20PH	○	○
GTER/L2020JX-ED42-S	21	20	20	120	31	12.30	42	E	SI60M050160-07214H	TT20PH	○	○

Note: SI60M040160* stands for M4X16



● Stock ○ Available Upon Order

Parting and Grooving Holders-GT series

Face Grooving Holders-Horizontal



The picture is right hand holder

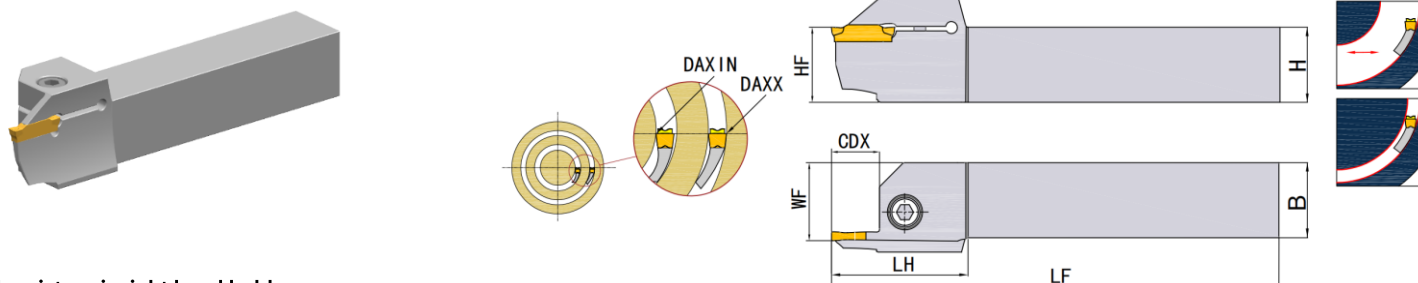
Ordering Code	Dimension (mm)								SSC	Screw 	Wrench 	Stock	
	CDX	DAXIN	DAXX	H=HF	B	LF	LH	WF				R	L
GTFR/L2020K-E12-D38	12	38	48	20	20	125	32	21	E	SCAM050200H	TH40LH	○	○
GTFR/L2020K-E12-D42	12	42	60	20	20	125	32	21	E	SCAM050200H	TH40LH	○	○
GTFR/L2020K-E12-D54	12	54	75	20	20	125	32	21	E	SCAM050200H	TH40LH	○	○
GTFR/L2020K-E12-D67	12	67	100	20	20	125	32	21	E	SCAM050200H	TH40LH	○	○
GTFR/L2020K-E12-D90	12	90	130	20	20	125	32	21	E	SCAM050200H	TH40LH	○	○
GTFR/L2020K-E12-D130	12	130	300	20	20	125	32	21	E	SCAM050200H	TH40LH	○	○
GTFR/L2525M-E18-D38	18	38	48	25	25	150	40	26	E	SCAM060200H	TH50LH	●	●
GTFR/L2525M-E18-D42	18	42	60	25	25	150	40	26	E	SCAM060200H	TH50LH	●	●
GTFR/L2525M-E18-D54	18	54	75	25	25	150	40	26	E	SCAM060200H	TH50LH	●	●
GTFR/L2525M-E18-D67	18	67	100	25	25	150	40	26	E	SCAM060200H	TH50LH	●	●
GTFR/L2525M-E18-D90	18	90	130	25	25	150	40	26	E	SCAM060200H	TH50LH	●	●
GTFR/L2525M-E18-D130	18	130	300	25	25	150	40	26	E	SCAM060200H	TH50LH	●	●
GTFR/L2020K-F12-D40	12	40	60	20	20	125	34	21	F	SCAM050200H	TH40LH	○	○
GTFR/L2020K-F12-D52	12	52	72	20	20	125	34	21	F	SCAM050200H	TH40LH	○	○
GTFR/L2020K-F12-D64	12	64	100	20	20	125	34	21	F	SCAM050200H	TH40LH	○	○
GTFR/L2020K-F12-D92	12	92	140	20	20	125	34	21	F	SCAM050200H	TH40LH	○	○
GTFR/L2020K-F12-D132	12	132	230	20	20	125	34	21	F	SCAM050200H	TH40LH	○	○
GTFR/L2020K-F12-D220	12	220	500	20	20	125	34	21	F	SCAM050200H	TH40LH	○	○
GTFR/L2525M-F12-D70	12	70	100	25	25	150	34	26	F	SCAM060200H	TH50LH	●	●

Note: SCAM060200H stands for M6X20



● Stock ○ Available Upon Order

Parting and Grooving Holders-GT series

Face Grooving Holders-Horizontal



The picture is right hand holder

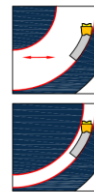
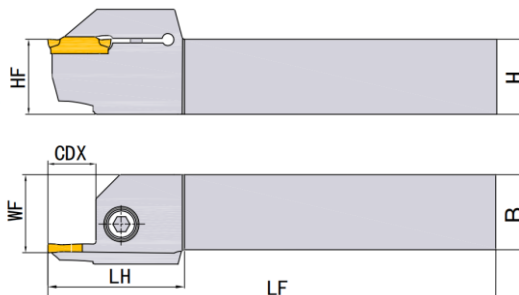
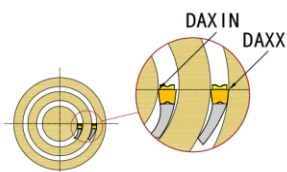
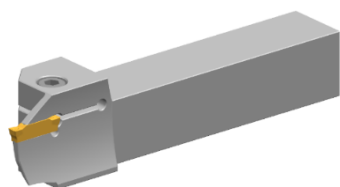
Ordering Code	Dimension (mm)								SSC	Screw 	Wrench 	Stock	
	CDX	DAXIN	DAXX	H=HF	B	LF	LH	WF				R	L
GTFR/L2525M-F12-D40	12	40	60	25	25	150	34	26	F	SCAM060200H	TH50LH	●	●
GTFR/L2525M-F12-D52	12	52	72	25	25	150	34	26	F	SCAM060200H	TH50LH	●	●
GTFR/L2525M-F12-D64	12	64	100	25	25	150	34	26	F	SCAM060200H	TH50LH	●	●
GTFR/L2525M-F12-D92	12	92	140	25	25	150	34	26	F	SCAM060200H	TH50LH	●	●
GTFR/L2525M-F12-D132	12	132	230	25	25	150	34	26	F	SCAM060200H	TH50LH	●	●
GTFR/L2525M-F12-D220	12	220	500	25	25	150	34	26	F	SCAM060200H	TH50LH	●	●
GTFR/L2525M-F12-D300	12	300	1100	25	25	150	34	26	F	SCAM060200H	TH50LH	●	●
GTFR/L2525M-G12-D40	12	40	70	25	25	150	34	26	G	SCAM060200H	TH50LH	●	●
GTFR/L2525M-G12-D60	12	60	95	25	25	150	34	26	G	SCAM060200H	TH50LH	●	●
GTFR/L2525M-G12-D85	12	85	130	25	25	150	34	26	G	SCAM060200H	TH50LH	●	●
GTFR/L2525M-G12-D120	12	120	180	25	25	150	34	26	G	SCAM060200H	TH50LH	●	●
GTFR/L2525M-G12-D175	12	175	500	25	25	150	34	26	G	SCAM060200H	TH50LH	●	●
GTFR/L2525M-H12-D40	12	40	70	25	25	150	35	26	H	SCAM060200H	TH50LH	●	●
GTFR/L2525M-H12-D58	12	58	100	25	25	150	35	26	H	SCAM060200H	TH50LH	●	●
GTFR/L2525M-H12-D88	12	88	180	25	25	150	35	26	H	SCAM060200H	TH50LH	●	●
GTFR/L2525M-H12-D168	12	168	400	25	25	150	35	26	H	SCAM060200H	TH50LH	●	●

Note: SCAM060200H stands for M6X20



● Stock ○ Available Upon Order

Parting and Grooving Holders-GT series

Face Grooving Holders-Horizontal



The picture is right hand holder

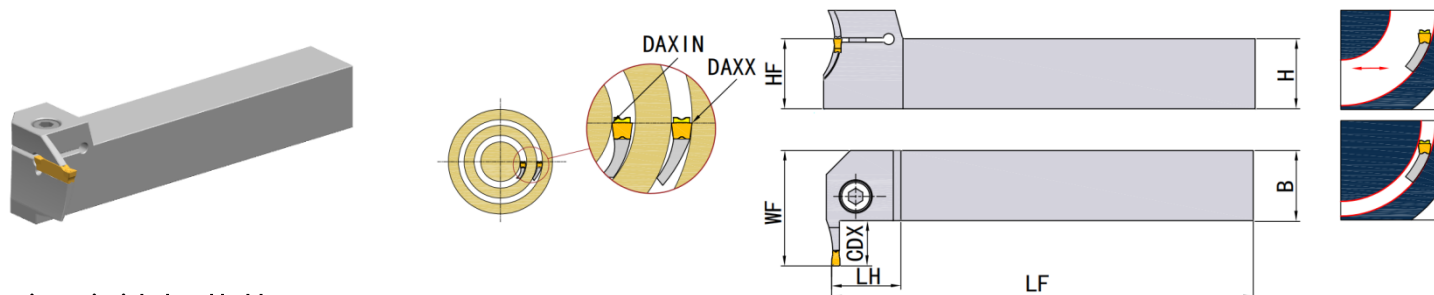
Ordering Code	Dimension (mm)									SSC	Screw 	Wrench 	Stock	
	CDX	DAXIN	DAXX	H=HF	B	LF	LH	WF	R				L	
GTFR/L2525M-J15-D75	15	75	115	25	25	150	39	26	J	SCAM080260H	TH60LH	●	●	
GTFR/L2525M-J15-D110	15	110	150	25	25	150	39	26	J	SCAM080260H	TH60LH	●	●	
GTFR/L2525M-J15-D140	15	140	400	25	25	150	39	26	J	SCAM080260H	TH60LH	●	●	
GTFR/L2525M-J24-D50	24	50	80	25	25	150	55	26	J	SCAM080260H	TH60LH	●	●	
GTFR/L2525M-J24-D75	24	75	115	25	25	150	55	26	J	SCAM080260H	TH60LH	●	●	
GTFR/L2525M-J24-D110	24	110	150	25	25	150	55	26	J	SCAM080260H	TH60LH	●	●	
GTFR/L2525M-J24-D140	24	140	400	25	25	150	55	26	J	SCAM080260H	TH60LH	●	●	
GTFR/L3225P-J24-D110	24	110	150	32	25	170	55	26	J	SCAM080260H	TH60LH	○	○	
GTFR/L3225P-J24-D140	24	140	400	32	25	170	55	26	J	SCAM080260H	TH60LH	●	○	

Note: SCAM080260H stands for M8X26



● Stock ○ Available Upon Order

Parting and Grooving Holders-GT series

Face Grooving Holders-Perpendicular



The picture is right hand holder

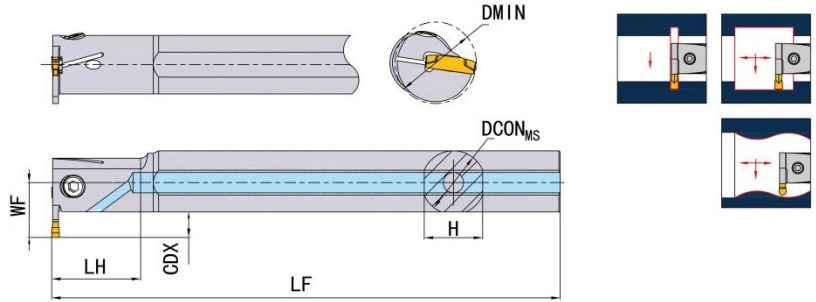
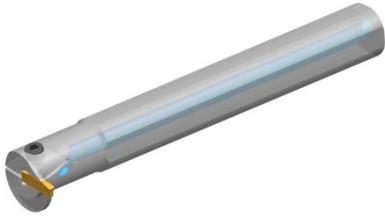
Ordering Code	Dimension (mm)									SSC	Screw 	Wrench 	Stock	
	CDX	DAXIN	DAXX	H=HF	B	LF	LH	WF	R				L	
GTFPR/L2525M-E09-D70	9	70	100	25	25	150	24	35.5	E	SCAM060200H	TH50LH	●	○	
GTFPR/L2525M-E09-D110	9	110	170	25	25	150	24	35.5	E	SCAM060200H	TH50LH	●	○	
GTFPR/L2525M-F12-D40	12	40	60	25	25	150	24	38.5	F	SCAM060200H	TH50LH	●	○	
GTFPR/L2525M-F12-D52	12	52	72	25	25	150	24	38.5	F	SCAM060200H	TH50LH	●	○	
GTFPR/L2525M-F12-D64	12	64	100	25	25	150	24	38.5	F	SCAM060200H	TH50LH	●	●	
GTFPR/L2525M-F12-D92	12	92	140	25	25	150	24	38.5	F	SCAM060200H	TH50LH	●	●	
GTFPR/L2525M-F12-D132	12	132	230	25	25	150	24	38.5	F	SCAM060200H	TH50LH	●	○	
GTFPR/L2525M-F12-D220	12	220	500	25	25	150	24	38.5	F	SCAM060200H	TH50LH	●	○	
GTFPR/L2525M-F12-D300	12	300	1100	25	25	150	24	38.5	F	SCAM060200H	TH50LH	●	○	
GTFPR/L2525M-G15-D70	15	70	100	25	25	150	24	41.5	G	SCAM060200H	TH50LH	●	○	
GTFPR/L2525M-G15-D110	15	110	170	25	25	150	24	41.5	G	SCAM060200H	TH50LH	●	○	
GTFPR/L2525M-H18-D168	18	168	400	25	25	150	32	44.5	H	SCAM060200H	TH50LH	●	○	
GTFPR/L2525M-J20-D50	20	50	80	25	25	150	32	46.5	J	SCAM080260H	TH60LH	●	○	
GTFPR/L2525M-J20-D75	20	75	115	25	25	150	32	46.5	J	SCAM080260H	TH60LH	●	○	
GTFPR/L2525M-J20-D110	20	110	150	25	25	150	32	46.5	J	SCAM080260H	TH60LH	●	○	
GTFPR/L2525M-J20-D140	20	140	400	25	25	150	32	46.5	J	SCAM080260H	TH60LH	●	○	
GTFPR/L3225P-J20-D110	20	110	150	32	25	170	32	46.5	J	SCAM080260H	TH60LH	●	○	
GTFPR/L3225P-J20-D140	20	140	400	32	25	170	32	46.5	J	SCAM080260H	TH60LH	●	○	

Note: SCAM060200H stands for M6X20



● Stock ○ Available Upon Order

Parting and Grooving Holders-GT series

Internal Holders



The picture is right hand holder

Ordering Code	Dimension (mm)							SSC	Screw 	Wrench 	Stock	
	CDX	DMIN	DCON _{MS}	WF	LF	LH	H				R	L
GTIR/L3220Q-B05	5	32	20	15.0	180	30	19	B	SI60M040120-05710H ^①	TT15PH ^②	●	○
GTIR/L3220Q-C06	6	32	20	16.0	180	30	19	C	SI60M040120-05710H ^①	TT15PH ^②	●	●
GTIR/L3225R-C06	6	32	25	18.5	200	35	24	C	SCAM040160H	TH30LH	●	○
GTIR/L4032S-C09	9	40	32	25.0	250	45	31	C	SCAM040160H	TH30LH	●	○
GTIR/L3220Q-E06	6	32	20	16.0	180	30	19	E	SI60M040120-05710H ^①	TT15PH ^②	●	○
GTIR/L3225R-E09	9	32	25	21.5	200	35	24	E	SCAM050160H	TH40LH	●	●
GTIR/L4032S-E09	9	40	32	25.0	250	45	31	E	SCAM050160H	TH40LH	●	○
GTIR/L5040T-E12	12	50	40	32.0	300	55	39	E	SCAM050200H	TH40LH	●	○
GTIR/L3225R-F09	9	32	25	21.5	200	35	24	F	SCAM050160H	TH40LH	●	○
GTIR/L4032S-F10	10	40	32	26.0	250	45	31	F	SCAM060160H	TH50LH	●	●
GTIR/L5040T-F12	12	50	40	32.0	300	55	39	F	SCAM060200H	TH50LH	●	○
GTIR/L6050U-F13	13	60	50	38.0	350	65	49	F	SCAM060250H	TH50LH	●	○
GTIR/L3225R-G09	9	32	25	21.5	200	35	24	G	SCAM050160H	TH40LH	●	●
GTIR/L4032S-G11	11	40	32	27.0	250	45	31	G	SCAM060160H	TH50LH	●	●
GTIR/L5040T-G12	12	50	40	32.0	300	55	39	G	SCAM060200H	TH50LH	●	○
GTIR/L6050U-G13	13	60	50	38.0	350	65	49	G	SCAM060250H	TH50LH	●	○
GTIR/L5040T-H12	12	50	40	32.0	300	55	39	H	SCAM060200H	TH50LH	●	○
GTIR/L6050U-H13	13	60	50	38.0	350	65	49	H	SCAM060250H	TH50LH	●	○

Note: SCAM060200H stands for M6X20

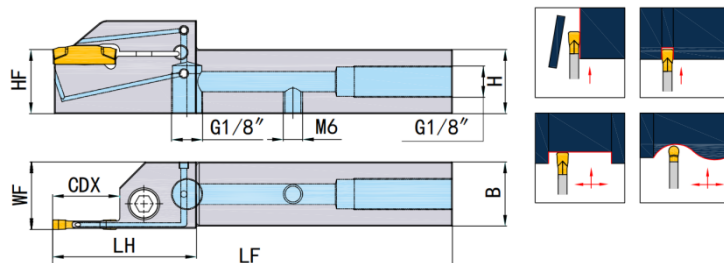
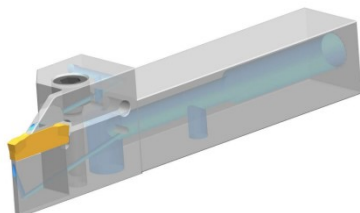
● Stock ○ Available Upon Order

① Torx Screw



② Flag Wrench

Parting and Grooving Holders-GT series

External Holders with High Pressure Cooling



The picture is right hand holder

Ordering Code	Dimension (mm)						SSC	Screw 	Wrench 	Stock	
	CDX	H=HF	B	LF	LH	WF				R	L
GTER/L2020K-E20-C	20	20	20	125	44.8	21	E	SCAM060200H	TH50LH	<input type="radio"/>	<input type="radio"/>
GTER/L2525M-E20-C	20	25	25	150	44.8	26	E	SCAM060200H	TH50LH	<input checked="" type="radio"/>	<input type="radio"/>
GTER/L2525M-F25-C	25	25	25	150	47	26	F	SCAM060200H	TH50LH	<input type="radio"/>	<input type="radio"/>
GTER/L2525M-G25-C	25	25	25	150	47	26	G	SCAM060200H	TH50LH	<input type="radio"/>	<input type="radio"/>
GTER/L2525M-H25-C	25	25	25	150	47	26	H	SCAM060200H	TH50LH	<input type="radio"/>	<input type="radio"/>
GTER/L3232P-J24-C	24	32	32	170	54.8	33	J	SCAM060200H	TH50LH	<input type="radio"/>	<input type="radio"/>

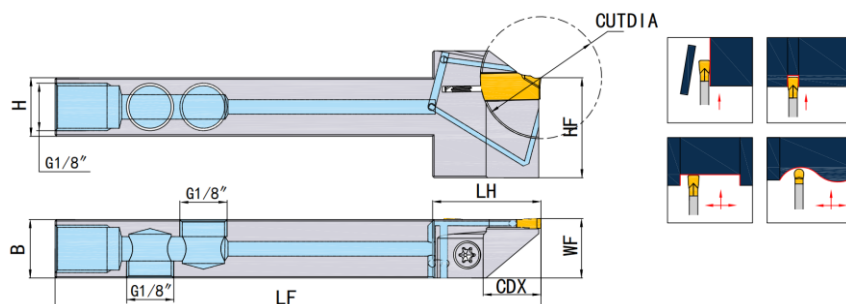
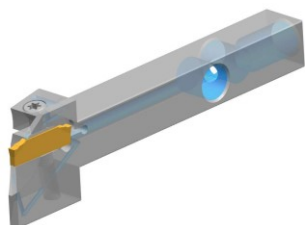
Note: SCAM060200H stands for M6X20

● Stock ○ Available Upon Order



Parting and Grooving Holders-GT series

External Holders with High Pressure Cooling

-for Automatic Lathe



The picture is right hand holder

Ordering Code	Dimension (mm)							SSC	Screw 	Wrench 	Stock	
	CDX	H=HF	B	LF	LH	WF	CUTDIA				R	L
GTER/L1212H-CD24-SC	12	12	12	100	19.5	12.2	24	C	SI60M040160-05718H	TT15PH	●	○
GTER/L1616H-CD32-SC	16	16	16	100	24.5	16.2	32	C	SI60M040160-05718H	TT15PH	○	○
GTER/L1212H-ED24-SC	12	12	12	100	19.5	12.3	24	E	SI60M040160-05718H	TT15PH	○	○
GTER/L1616H-ED32-SC	16	16	16	100	24.5	16.3	32	E	SI60M040160-05718H	TT15PH	○	○

Note: SI60M040160* stands for M4X16

● Stock ○ Available Upon Order



XIAMEN GOLDEN EGRET SPECIAL ALLOY CO.,LTD.

Add: No.69 Xinglong Road Huli District Xiamen CHINA
Factory Add: No.1601-1629 Jicheng Road Industrial
Concentration Area Tongan Xiamen CHINA
Tel: +86-592-7107392
Fax: +86-0592-7107322
P C : 361006
Email: GJ.GLB@CXTC.COM

www.gesac.net

 **400-998-6858**

